

## Engineering Form

### HALFEN Curtain Wall Top-Of-Slab Anchoring Questionnaire

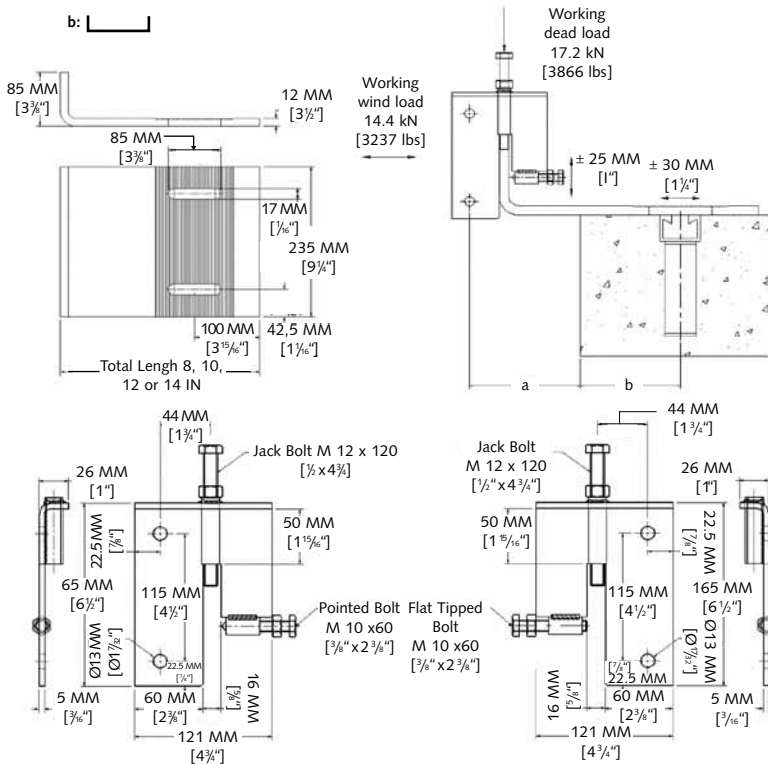
In order for us to be able to select the most efficient anchoring systems for your project, please:

1. Select 'HALFEN Top of Slab adjustable curtain wall bracket' and provide "b" or please provide "A" through "I" and Adjustment for custom clips (by others), as applicable.
2. Please provide the required information, questions 1 to 5 in the section 'Project Information'.
3. Fax to 877-683-4910, e-mail to [engineering@halfenusa.com](mailto:engineering@halfenusa.com) or e-mail to Sales representative.

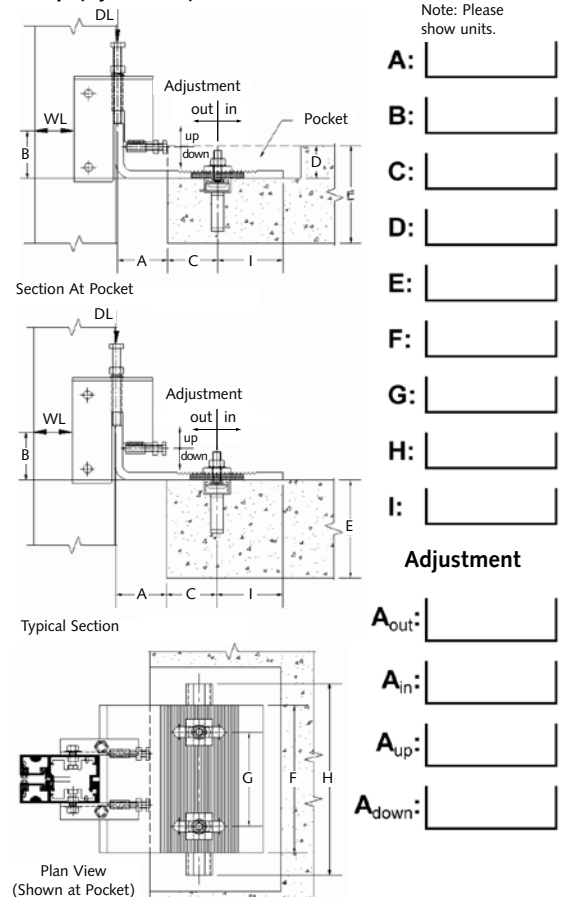
#### Clip Inquiry

##### HALFEN Top Of Slab Bracket (see catalog for dimensions)

- HTOS08: 8" BODY, NOMINAL 'a' + 'b' = 4", RANGE [2-5/8" - 5"]
- HTOS10: 10" BODY, NOMINAL 'a' + 'b' = 6", RANGE [4-5/8" - 7"]
- HTOS12: 12" BODY, NOMINAL 'a' + 'b' = 8", RANGE [6-5/8" - 9"]
- HTOS14: 14" BODY, NOMINAL 'a' + 'b' = 10", RANGE [8-5/8" - 11"]



##### Custom Clip (By Others)



© 2013 HALFEN GmbH, Germany  
applies also to copying in extracts.

PDF 03/13

F-209-USA - 06/11

#### Project Information

1. Project Name: \_\_\_\_\_
  2. Concrete Strength [f'c]: \_\_\_\_\_ psi  
\_\_\_\_ Normal Weight Concrete \_\_\_\_ Light Weight Concrete
  3. Customer Name: \_\_\_\_\_ Building Code: \_\_\_\_\_
  4. Location, City: \_\_\_\_\_ State: \_\_\_\_\_
  5. Wind Load 'WL': \_\_\_\_\_ lb
  6. Dead Load 'DL': \_\_\_\_\_ lb
- If (5) "WL" and/or (6) "DL" are not known, please provide the following:
7. Floor-to-Floor Height: \_\_\_\_\_ ft
  8. Mullion Centers: \_\_\_\_\_ ft
  9. Curtain Wall System Weight: \_\_\_\_\_ psf
  10. Wind Pressure: \_\_\_\_\_ psf
  11. Wind Suction: \_\_\_\_\_ psf

#### HALFEN USA Inc.

HALFEN USA Inc. • P.O. Box 18687 • San Antonio, TX 78218  
Phone: +1 800.423.9140  
Fax: +1 888.277.1695  
Email: [engineering@halfenusa.com](mailto:engineering@halfenusa.com)  
[www.halfenusa.com](http://www.halfenusa.com)

#### NOTES

Technical and design changes reserved. The information in this publication is based on state-of-the-art technology at the time of publication. We reserve the right to make technical and design changes at any time. HALFEN GmbH shall not accept liability for the accuracy of the information in this publication or for any printing errors.