

## Engineering Form

### HALFEN Curtain Wall Edge-Of-Slab Anchoring Questionnaire

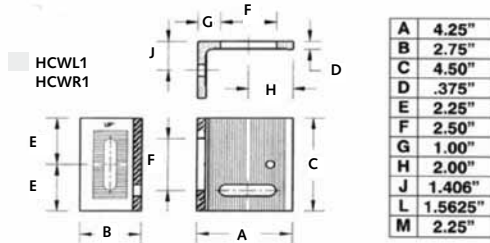
In order for us to be able to select the most efficient anchoring systems for your project, please:

1. Select appropriate 'HALFEN adjustable curtain wall clips' and provide "C" and "D" values or please provide "A" through "Q" for custom clips (by others), as applicable.
2. Please provide the required information, questions 1 to 6 in the section 'Project Information'.
3. Fax to 877-683-4910, e-mail to [engineering@halfenusa.com](mailto:engineering@halfenusa.com) or e-mail to Sales representative.

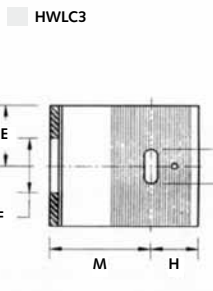
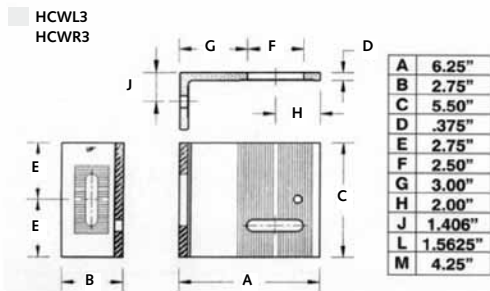
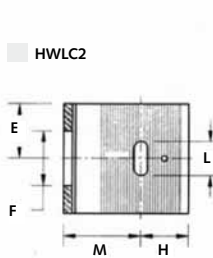
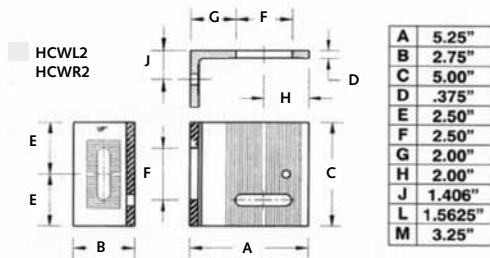
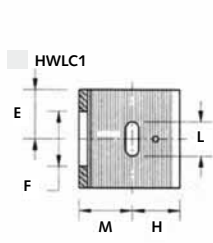
#### Clip Inquiry

##### HALFEN Adjustable Curtain Wall Clips

###### Dead Load

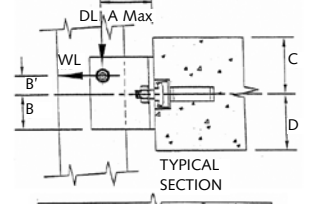


###### Wind Load



##### Custom Clip (By Others)

Note: Please show units.



A:

B:

B':

C:  \*

D:  \*

E:

F:

G:

H:

J:

K:

L:

M:

N:

P:

Q:

#### Project Information

1. Project Name: \_\_\_\_\_
2. Concrete Strength [f'c]: \_\_\_\_\_ psi
3. Location, City: \_\_\_\_\_ State: \_\_\_\_\_
4. Customer Name: \_\_\_\_\_ Building Code: \_\_\_\_\_
5. Wind Load 'WL': \_\_\_\_\_ lb
6. Dead Load 'DL': \_\_\_\_\_ lb
7. Dead Load Clip at: ☐ Every Floor ☐ Every other floor

If (5) "WL" and/or (6) "DL" are not known, please provide the following:

8. Floor-to-Floor Height: \_\_\_\_\_ ft
9. Mullion Centers: \_\_\_\_\_ ft
10. Curtain Wall System Weight: \_\_\_\_\_ psf
11. Wind Pressure: \_\_\_\_\_ psf
12. Wind Suction: \_\_\_\_\_ psf

#### HALFEN USA Inc.

HALFEN USA Inc. • P.O. Box 18687 • San Antonio, TX 78218  
Phone: +1 800.423.9140  
Fax: +1 888.277.1695  
Email: [engineering@halfenusa.com](mailto:engineering@halfenusa.com)  
[www.halfenusa.com](http://www.halfenusa.com)

#### NOTES

Technical and design changes reserved. The information in this publication is based on state-of-the-art technology at the time of publication. We reserve the right to make technical and design changes at any time. HALFEN GmbH shall not accept liability for the accuracy of the information in this publication or for any printing errors.