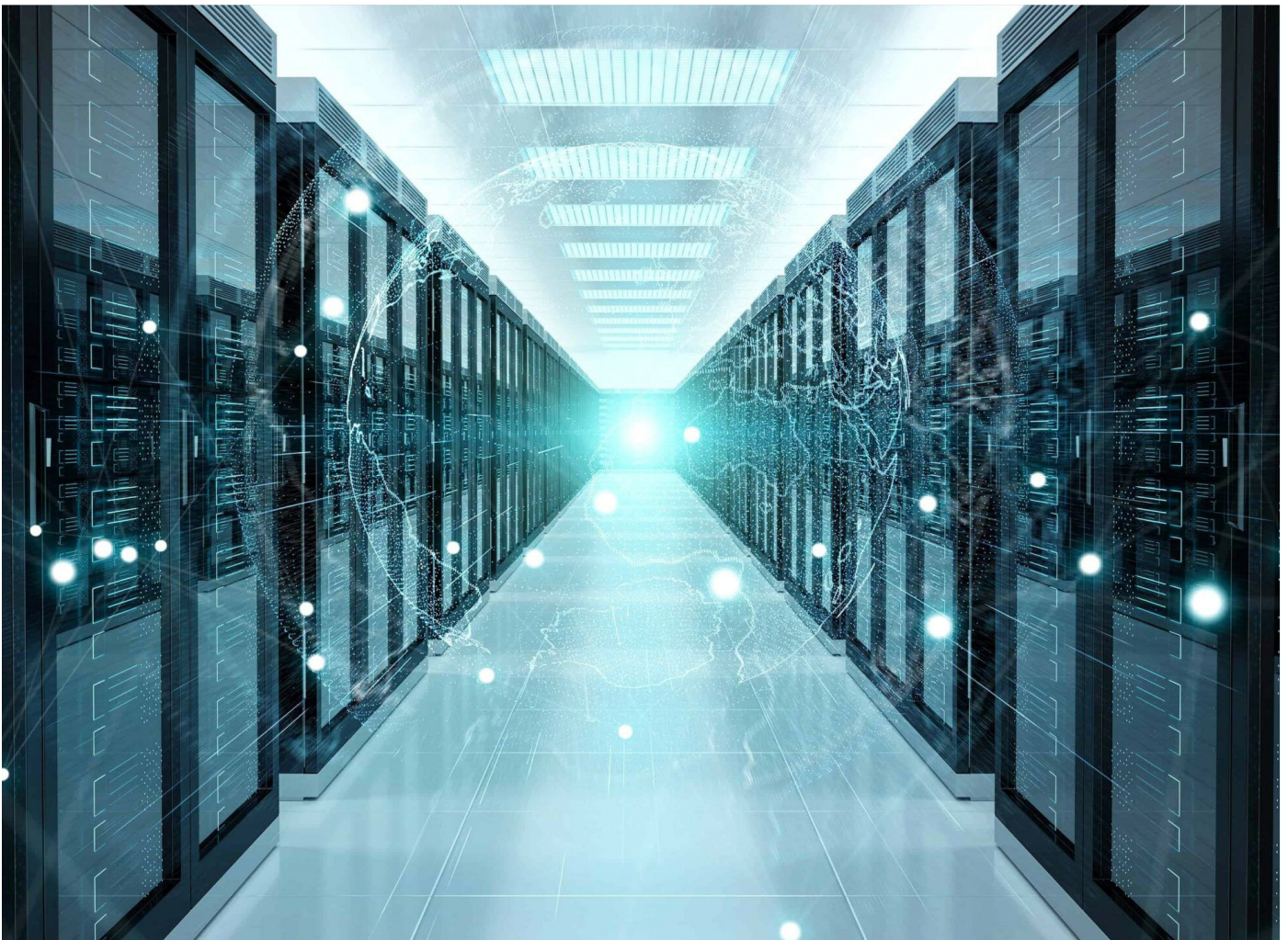


Anchoring & Fixing
Cast-In Channels

Leviat®
A CRH COMPANY

Data Center Connections

Engineered solutions for mission critical applications



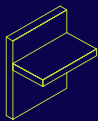
Featured product brand



Imagine. Model. Make.

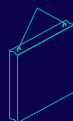
We imagine, model and make engineered products and innovative construction solutions that help turn architectural visions into reality and enable our construction partners to build better, safer, stronger and faster.

Our areas of expertise:



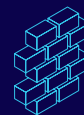
Structural Connections

Systems to form robust, efficient connections, and continuity of concrete reinforcement as necessary, between walls, slabs, columns, beams and balconies, providing structural integrity as well as enhanced thermal and acoustic performance.



Lifting & Bracing

Systems for the safe and efficient transportation, lifting and temporary bracing of cast concrete elements and tilt-up panels before permanent structural connections are made.



Façade Support & Restraint

Systems for the safe and thermally-efficient fixing of the external building envelope, including brick and natural stone, insulated sandwich panels, curtain walling and suspended concrete façades, and also the repair and strengthening of existing masonry installations.



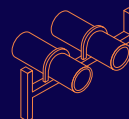
Anchoring & Fixing

Systems for fixing secondary fixtures to concrete, including anchor channels, bolts and inserts; also tension rod systems for roofs and canopies.



Formwork & Site Accessories

Non-structural accessories that complement our engineered solutions and help keep your construction environment operating safely and efficiently, including molds for casting standard and special concrete elements and construction essentials such as reinforcing bar spacers.



Industrial Technology

Mounting channels, pipe clamps and other versatile framing systems that provide safe fixing in a wide range of industrial applications.

Leviat product ranges:

Ancon | Aschwanden | Connolly | Halfen | Helifix | Isedio | Meadow Burke | Modersohn | Moment | Plaka | Scaldex | Thermomass



Applications

Adjustable connections for suspended data center infrastructure

Halfen HTA Channel System

Halfen HTA channel system delivers adjustability and long-term efficiency. Cast directly into the double tee stem, Halfen HTA channel products eliminate the need for post-installed anchors, minimizing potential drilling

damage to the finished concrete or underlying reinforcement.

The system meets data center load requirements and provides simple, as well as time- and cost-saving installations.

Halfen HTA channels are compatible with standard 1 $\frac{5}{8}$ " MEP hardware accessories and hanging ceiling solutions.

Key Features & Benefits

- **Efficient:** Halfen cast-in channels are made with 1 $\frac{5}{8}$ " x $\frac{7}{8}$ " 12 Gauge channel and provide quick installation of standard 1 $\frac{5}{8}$ " MEP hardware.
- **Safe:** Halfen cast-in channels are ICC approved.
- **Sustainable:** Halfen cast-in channels and components are easily adjustable, and reusable.



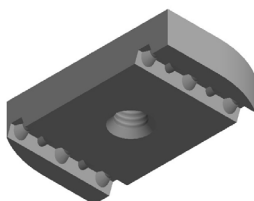
Engineered Solutions for Mission Critical Applications

HTA-DT (Figure 1)					
Item Number	Description	h	y	x	Length
0001.160-00550	HTA-DT 41/22 HDG-3048 / 13	3 1/4"	7/8"	2"	10'
0001.160-00551	HTA-DT 41/22 HDG-6096 / 26	3 1/4"	7/8"	2"	20'

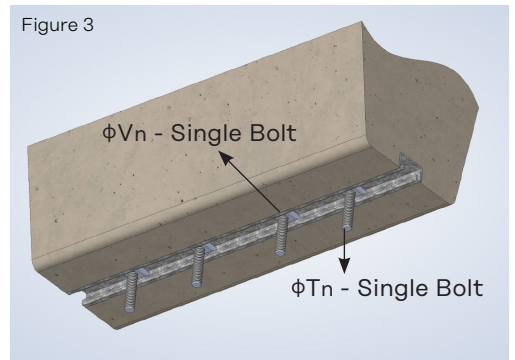
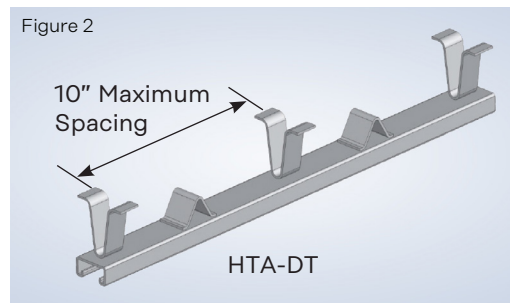
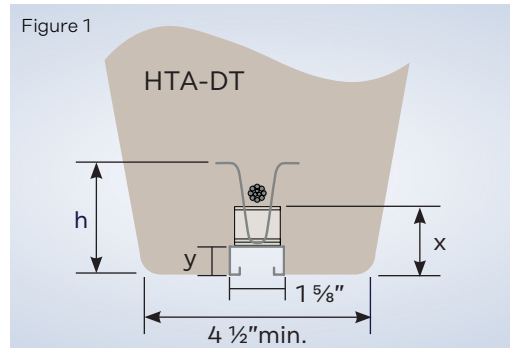
PERFORMANCE DATA (Figure 3)	
Load Condition	Design Strength
Pull-out load on single bolt (ϕT_n)	2,800 lb
Shear load on single bolt (ϕV_n)	1,100 lb

NOTE:

1. Loads shown are based on the sample diagram in Figure 3.
2. Minimum 10" single bolt spacing
3. Minimum 4" edge distance from end of channel to edge of concrete
4. Loads based on uncracked concrete strength of 5,000 psi.
Capacity increases for higher strength concrete is not permitted.
5. Check interaction using $\left(\frac{T_{Actual}}{\phi T_n} \right)^{5/3} + \left(\frac{V_{Actual}}{\phi V_n} \right)^{5/3} \leq 1.0$
6. Site cutting to length may be carried out, however cut must be no further than 1 1/2" from anchor. Repair cut-ends with zinc galvanizing spray.
7. **Foam filled. Standard corrosion finish is HDG, and is also available in stainless steel finish for zinc whisker prevention.**



Channels accommodate standard 1 5/8" MEP hardware including spring nuts and channel nuts.



Channel bolts and MEP attachment hardware can not be placed past the last anchor.

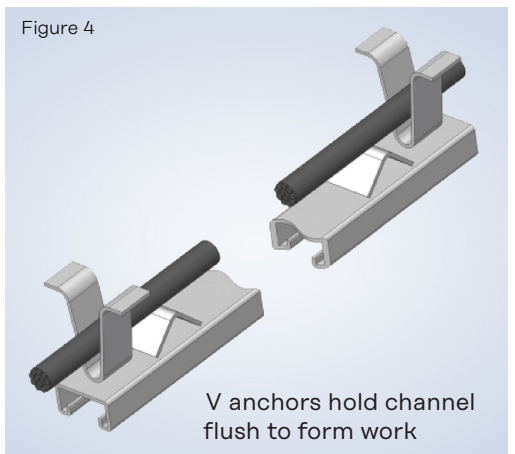


Figure 5

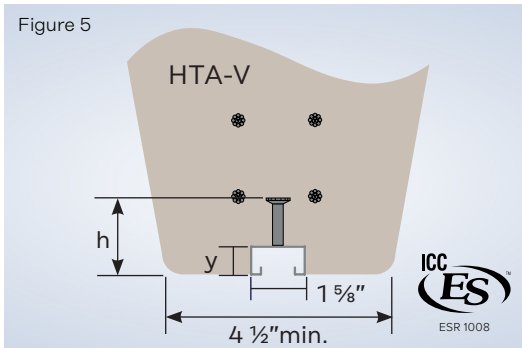


Figure 6

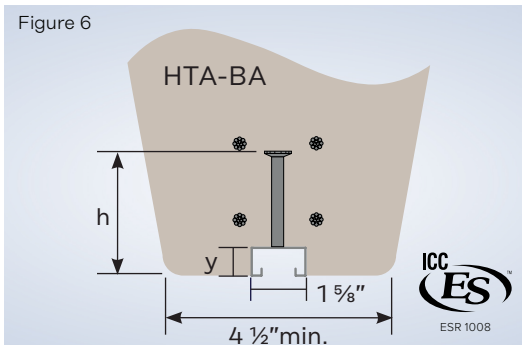
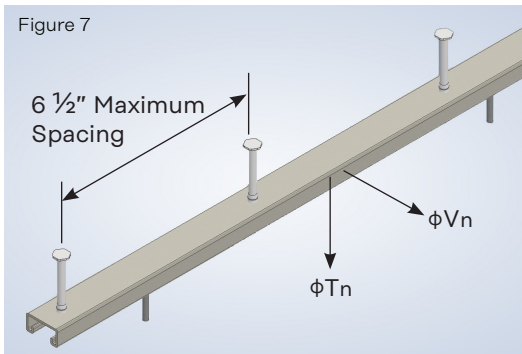
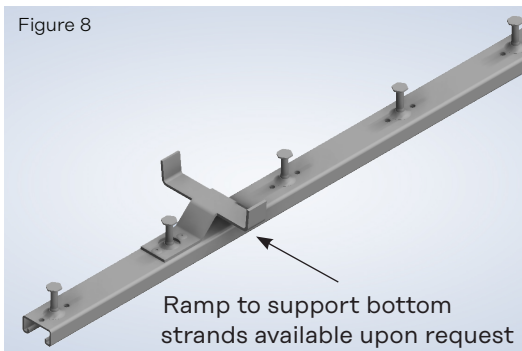


Figure 7

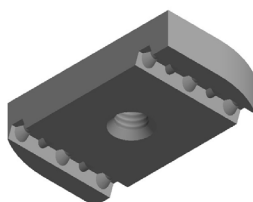


Channel bolts and MEP attachment hardware can not be placed past last anchor.

Figure 8



Channels accommodate standard 1 5/8" MEP hardware including spring nuts and channel nuts.



HTA-V (Figure 5)

Item Number	Description	h	y	Length
0004.086-00006	HTA-V 41/22 HDG-3030 / 19	2 1/8"	7/8"	10'

HTA-BA (Figure 6)

Item Number	Description	h	y	Length
0001.168-00001	HTA-BA 41/22 HDG-3030 / 19	3 5/16"	7/8"	10'

PERFORMANCE DATA (Figure 7)

Load Condition	Design Strength
Pull-out load on single bolt (ϕT_n)	HTA-V - 2,150lb HTA-BA - 2,680lb
Shear load on single bolt (ϕV_n)	HTA-V - 1,740lb HTA-BA - 1,740lb

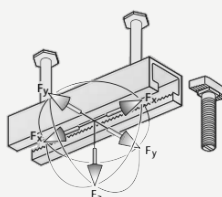
NOTE:

1. Loads shown are based on the sample diagram in Figure 7.
2. Minimum 10" single bolt spacing
3. Minimum 4" edge distance from end of channel to edge of concrete
4. Loads based on 6000psi NWC, uncracked. Capacity increases for higher strength concrete is not permitted.
5. Check interaction using $\left(\frac{T_{Actual}}{\phi T_n} \right)^{5/3} + \left(\frac{V_{Actual}}{\phi V_n} \right)^{5/3} \leq 1.0$
6. Site cutting to length may be carried out, however cut must be no further than 1 1/2" from anchor. Repair cut-ends with zinc galvanizing spray.
7. Foam filled. Standard corrosion finish is HDG, and is also available in stainless steel finish for zinc whisker prevention.

Leviat also offers...

Halfen HZA DYNAGRIP®

Serrated Anchor Channels with serrated Halfen T-bolts provide safe three-dimensional load capacity with superior seismic performance.



Notes

North American Locations

California

3611 E La Palma Ave
Anaheim CA 92806
(800) 804-6565

Iowa

1000 Technology Drive
Boone IA 50036
(800) 232-1748

Pennsylvania

565 Oak Ridge Road
Hazle Township PA 18202
(800) 550-0060

Florida Corporate

6467 S Falkenburg Road
Riverview FL 33578
(800) 282-7213

New Jersey

526 US Route 46
Teterboro NJ 07608
(800) 207-7778

Texas

7000 Will Rogers Blvd
Fort Worth TX 76140
(800) 993-9641

Georgia

3080 N Lanier Parkway
Decatur GA 30034
(800) 241-5662

Oregon

155 SE Hazel Dell Way
Canby OR 97013
(888) 232-9991

Texas

6500 N Interstate 35
San Antonio TX 78218
(800) 323-6896

Contact Information

Customer Service

(877) 518-7665

Email

info@leviat.us

Engineering Support

(813) 212-5866

Web

www.leviat.com

Leviat.com

For information on certified management systems and standards see www.meadowburke.com | www.halfen.com | www.thermomass.com

Notes regarding this catalogue

© Protected by copyright. The construction applications and details provided in this publication are indicative only. In every case, project working details should be entrusted to appropriately qualified and experienced persons. Whilst every care has been exercised in the preparation of this publication to ensure that any advice, recommendations or information is accurate, no liability or responsibility of any kind is accepted by Leviat for inaccuracies or printing errors. Technical and design changes are reserved. With a policy of continuous product development, Leviat reserves the right to modify product design and specification at any time.



L303-A001