

MB Bowco Lift Pin

Precision Utility Precast Connections

Overview

Leviat's MB Threaded Lift Pin system simplifies the lifting of precast manhole segments. It consists of a Lift Pin Socket that is positioned in the form before pouring. Once the form is stripped, the lift pin can be easily threaded into the socket by hand or with a drive socket, providing a safe and efficient lifting method.

Features

- **Advantages:**
 - Unique handle design for easy grip
 - Can be installed in either wet cast or dry cast concrete products
 - Stop guide for accurate installation
 - Can be used with spreaded bar and chains, hooks or slings
 - Exterior rings on insert ensure no infiltration or exfiltration along the outside of part.

- **Easy to Install:**
 - Standard lift insert fits onto locating pin inserted through outside form. For use with wet and dry cast method.
- **Composition:**
 - Injection molded with durable polypropylene conforming to ASTM-D4101
 - 1" Diameter Grade 60 reinforcing bar conforming to ASTM A-615
 - Lift inserts are a single injection molded part. This guarantees water-tight and vacuum-tight fit.



Product Data - MB Bowco Lift Pin

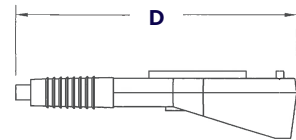
Item Number	Description	Box Quantity	Pallet Quantity
BC120060	LP9 Lift Pin	–	1,500
BC120095	LPT Lift Pin Socket - Threaded	200	4,800
MBLPSOC	LP9 Lift Pin Drive Socket	–	–

Notes:

1. Table based on dead load only, 150 PCF & standard concrete compressive strength of 3,500 PSI
2. Lift Pin requires a wet set installation or BC120095 socket to achieve published S.W.L.
3. Shear S.W.L 4,000 lbs, Safety factor 4:1
4. Minimum edge distance 10"
5. Manhole thickness: 10"
6. Bowco lift pins are only to be used with Bowco Lift pin sockets

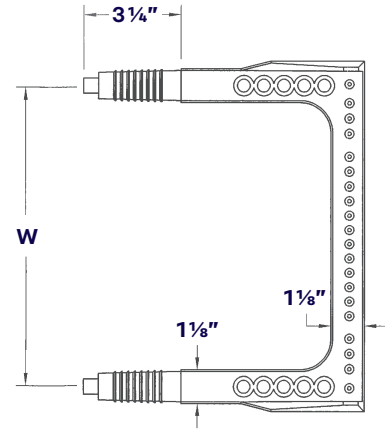
MB Bowco Manhole Step

Safe, Durable Underground Access



Product Data - MB Bowco Manhole Step

Item Number	Description	W	D	Packaging
BC110030	81213-R Black Step	13"	8 1/2"	25 / box 600 / plt
BC110040	81213-R Orange Step	13"	8 1/2"	25 / box 600 / plt
BC110140	93810-R Black Step Double-Faced	10"	9 3/8"	25 / box 700 / plt
BC110150	93810-R Orange Step Double-Faced	10"	9 3/8"	25 / box 700 / plt
BC110220	93813-R Black Step	13"	9 3/8"	25 / box 600 / plt
BC110240	93813-R Orange Step	13"	9 3/8"	25 / box 600 / plt



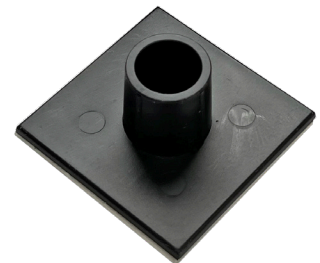
SP Socket

- Works well with Dry Cast applications
- Excellent for vacuum testing
- Use removable pin to hold in place



OR Socket

- Works well with flat or round wall structures – Wet or Dry Cast
- Mounts to wood or steel forms using threaded holes in closed end



SPSL-1 Socket Locator

- The SPSL-1 adhesive step socket locator helps secure proper placement of the manhole step socket prior to concrete pouring



SSB Socket

- Works well for round wall forms
- Socket breaks away from form when stripping
- Inserts into pre-drilled holes in form
- Keyed to ensure correct installation

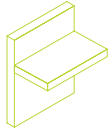


Sizing Pin

- Used to easily create installation locations

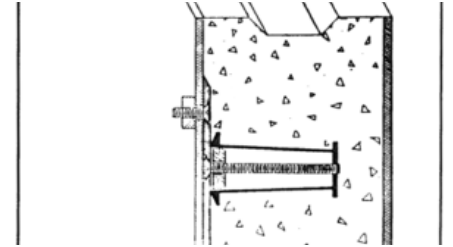
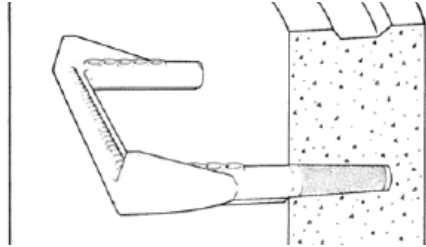
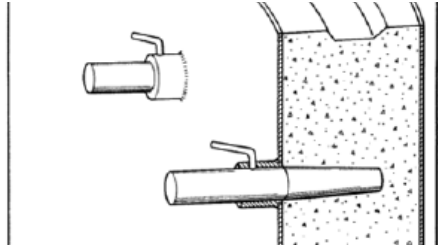
Product Data - MB Bowco Manhole Step Accessories

Item Number	Description	Packaging
BC110390	SP Socket	400 / box
BC110420	SSB Socket	400 / box
BC110340	OR Socket	420 / box 10,080 / plt
BC110410	SPSL-1 Locator	250 / box
BC110380	Sizing Pin	200 / box



MB Bowco Manhole Steps

Installation Guide



Drilling Holes in New or Old Concrete

To install steps into new or old concrete use a heavy-duty impact or electric drill with the appropriate size bit.

On-the-job installation of steps in new or old concrete:

1. Use a 1 1/8" drill bit. Drill two holes 3 3/8" deep on 10" or 13" centers.
2. Grout the step in with a non-shrink 3,000 PSI or greater grout.

For field and in-plant installation by an installer who is not familiar with drilling holes in concrete:

1. Use a 7/8" drill bit. Drill two holes 3 3/8" deep on 10" or 13" centers.
2. Pound the step in with a rubber mallet.

