

Structural Connections  
Infrastructure Products

**Leviat**<sup>®</sup>  
A CRH COMPANY

# MB Bowco Polymer Threaded Insert

## Cost-Effective Concrete Fastening

### Overview

MB Bowco Polymer Threaded Inserts are a simple, strong and cost-effective method for anchoring railings, frames and similar fixtures to precast or cast-in-place concrete units. Available locator accessories apply easily to wood or metal forms to aid precision insert placement.

Light-weight and easy-to-install, Polymer Threaded Inserts will not corrode or rust and offer a clean, unobtrusive bolted connection point for post-installed hardware and equipment on almost any concrete surface.

### Features

- **Easy Installation:** Polymer Threaded Inserts install quickly, especially when used in conjunction with Press-In, Tap-On, or Stick-On MB Bowco Insert Locators



- **Versatile:** Ideal for a variety of uses, including:
  - Bolting equipment, racking or channels to vault walls
  - Securing HVAC units and other equipment to concrete pads
  - Bolting metal or cast-iron frames to concrete lids
  - Suspending pipes and conduit from concrete panels
  - Attaching handrails and railing posts
- **Reliable:** Superior mechanical strength and corrosion resistance for dependable, long-term performance
- **Lightweight:** Polymer Threaded Inserts are easy to handle and install
- **Convenient Sizes:** Available in various bolt diameters ranging from 1/4" to 3/4"

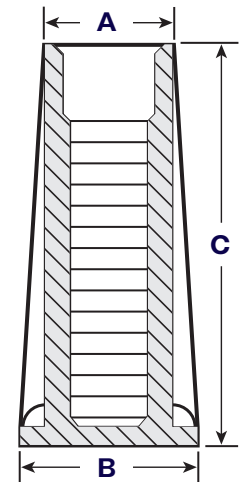


# MB Bowco Insert Locator

Cost-Effective Concrete Fastening

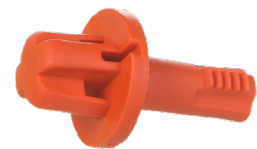
## Product Data - MB Bowco Polymer Threaded Insert

Item Number	Bolt Diameter	NC Threaded	A	B	C	SWL	Packaging
BC140180	1/4"	20	0.75"	1"	1.5"	1,000 lbs	1,400 / box
BC140220	3/8"	16	0.75"	1"	1.5"	1,000 lbs	1,400 / box
BC140110	1/2"	13	0.75"	1.25"	1.5"	1,000 lbs	850 / box
BC140150	1/2"	13	0.75"	1.25"	1.75"	1,200 lbs	700 / box
BC140130	1/2"	13	0.75"	1.25"	2.5"	2,500 lbs	500 / box
BC140120	1/2"	13	0.75"	1.25"	3.25"	2,500 lbs	400 / box
BC140200	3/4"	10	1"	1.63"	3.2"	3,000 lbs	225 / box
BC140240	5/8"	11	0.95"	1.38"	2.95"	3,000 lbs	300 / box

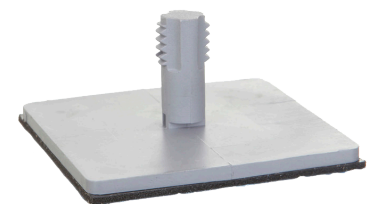


## Product Data - MB Bowco Threaded Insert Locator

Item Number	Description	Insert Diameter	Packaging
BC140260	PI12X38 Insert Locator-Press In 3/8" Hole	1/2"	1,500 / box
BC140280	PI12X58 Insert Locator-Press In 5/8" Hole	1/2"	1,500 / box
BC140290	PI12X58S Short Locator-Press In 5/8" Hole	1/2"	2,000 / box
BC140330	PI38X38 Insert Locator-Press In 3/8" Hole	3/8"	2,500 / box
BC140350	PI58X58 Locator 5/8" Hole	5/8"	900 / box
BC140370	SO12 Insert Locator - Stick On	1/2"	250 / box
BC140400	SO12ESPC Insert Locator - Stick On	1/2"	500 / box
BC140420	SO12SA Short Stick On Threaded Insert Locator	1/2"	500 / box
BC140440	SO14 Insert Locator - Stick On	1/4"	350 / box
BC140450	SO34 Insert Locator - Stick On	3/4"	200 / box
BC140460	SO38 Insert Locator - Stick On	3/8"	250 / box
BC140470	SO58 Insert Locator - Stick On	5/8"	250 / box
BC140490	TO12 Insert Locator - Tap On with 3/16" Hole	1/2"	Call
BC140500	TO12 Insert Locator - Tap On with 1/4" Hole	1/2"	Call



**Press-In Locator**



**Stick-On Locator**



**Tap-On Locator**