



## Precast & Prestress Solutions

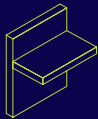
Industry-leading performance, reliability and safety



Imagine. Model. Make.

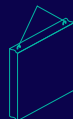
We imagine, model and make engineered products and innovative construction solutions that help turn architectural visions into reality and enable our construction partners to build better, safer, stronger and faster.

## Our areas of expertise:



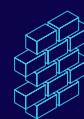
### Structural Connections

Systems to form robust, efficient connections, and continuity of concrete reinforcement as necessary, between walls, slabs, columns, beams and balconies, providing structural integrity as well as enhanced thermal and acoustic performance.



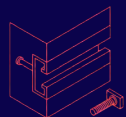
### Lifting & Bracing

Systems for the safe and efficient transportation, lifting and temporary bracing of cast concrete elements and tilt-up panels before permanent structural connections are made.



### Façade Support & Restraint

Systems for the safe and thermally-efficient fixing of the external building envelope, including brick and natural stone, insulated sandwich panels, curtain walling and suspended concrete façades, and also the repair and strengthening of existing masonry installations.



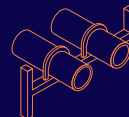
### Anchoring & Fixing

Systems for fixing secondary fixtures to concrete, including anchor channels, bolts and inserts; also tension rod systems for roofs and canopies.



### Formwork & Site Accessories

Non-structural accessories that complement our engineered solutions and help keep your construction environment operating safely and efficiently, including molds for casting standard and special concrete elements and construction essentials such as reinforcing bar spacers.



### Industrial Technology

Mounting channels, pipe clamps and other versatile framing systems that provide safe fixing in a wide range of industrial applications.

---

## Leviat product ranges:

Ancon | Aschwanden | Connolly | Halfen | Helifix | Isedio | Meadow Burke | Modersohn | Moment | Plaka | Scaldex | Thermomass

# Contents

<b>Precast &amp; Prestress Innovation</b>	<b>3</b>
<b>Engineering</b>	<b>5-6</b>
<b>Panel Insulation Systems</b>	<b>7-10</b>
Thermomass System NC	8
Thermomass System SC	8
Welded Wire Girders	9
<b>Panel Lifting</b>	<b>11-12</b>
RL-35 Ring Clutch	11
Rapid Lift Edge Lift Anchor	11
Rapid Lift Face Lift Anchor	11
<b>Panel Bracing</b>	<b>13</b>
MB Brace Badger Helical Anchor System	13
MB Braces	13
B-75 Wall Brace Insert	13
<b>Panel Accessories</b>	<b>14</b>
MB Brace Bolt	14
MB Rapid Bolt	14
MB Tuff Chair	14
<b>Panel Connections</b>	<b>15-17</b>
MB Super Lynk SR	15
Halfen Adjustable Bolted Connection	16
MB Burke Slot	16
<b>Double Tee Connections</b>	<b>18</b>
<b>Double Tee Corbel Replacement</b>	<b>19-20</b>
MB Rapid Lok Ultimate	19
MB Rapid Lok Gen II	20
<b>Splicing Products</b>	<b>21-22</b>
BT Couplers	21
MBT Couplers	22
<b>Prestresser Accessories</b>	<b>23-24</b>
<b>Utility Connections</b>	<b>25-26</b>
MB Bowco Duct Terminators	25
MB Bowco Pulling Irons and Pockets	25
MB Bowco Manhole Steps	26
<b>Utility Lifting</b>	<b>27-28</b>
MB DogBone Lifting Anchor	27
MB Hook Lift Lifting System Anchors	28
MB V-Anchor Lifting System	28
MB Cable Lift Loop Plus	28



**Insulation Systems:**  
Fiber-composite Connectors



**Corbel Replacement:**  
Rapid Lok Ultimate



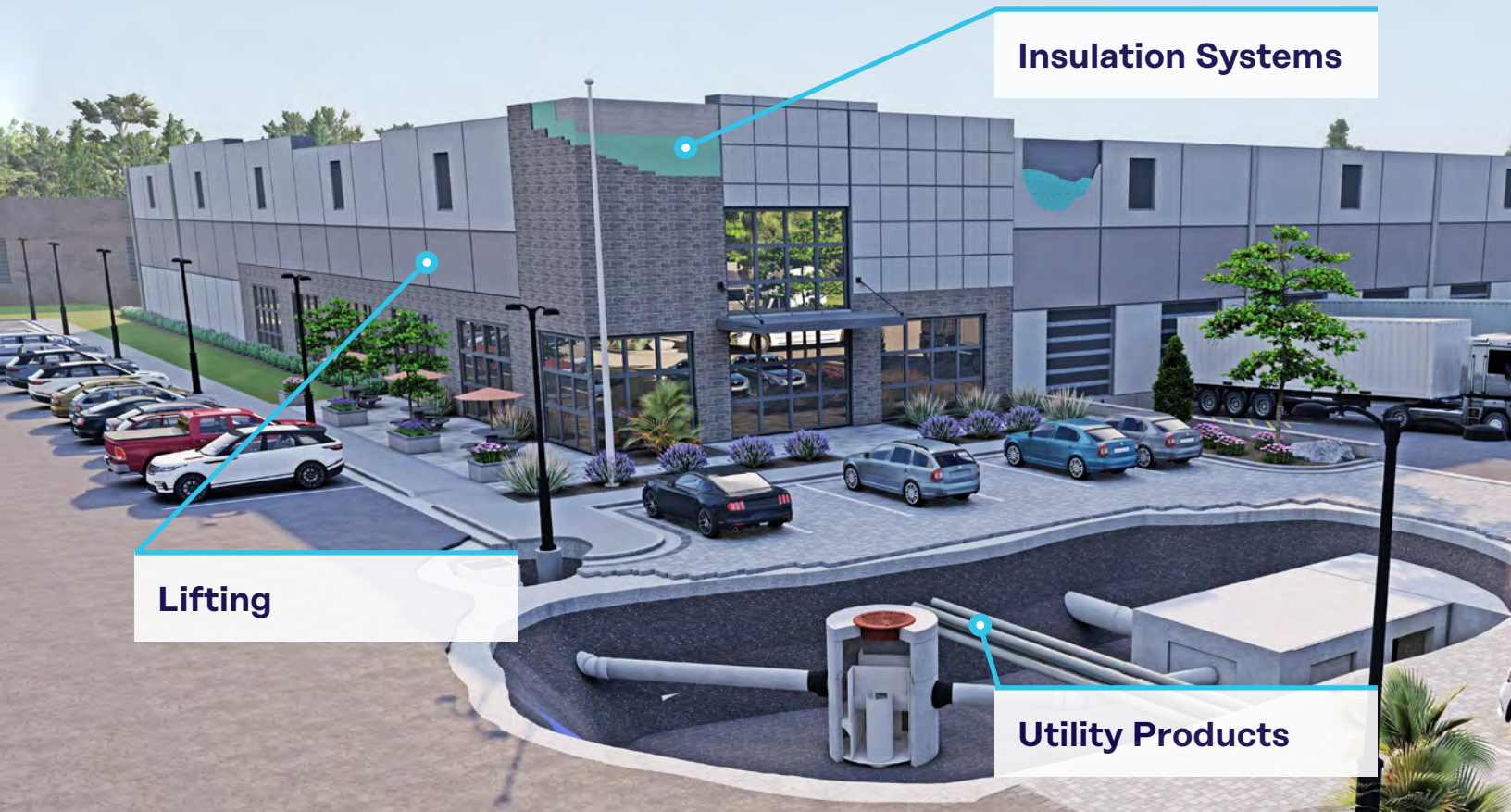
**Utility Connections:**  
Duct Terminators

## Industry Leadership

Leviat is proud to be a member of a number of leading Precast Industry Associations, including:







**Insulation Systems**

**Lifting**

**Utility Products**

## Precast & Prestress Innovation

Precast concrete elements form much of today's built environment, both seen and unseen. From downtown, high-rise building envelopes to underground water and data transmission networks, precast concrete is as ubiquitous as it is durable.

Used in modern construction for nearly a century, precast concrete's time-saving

capabilities, quality control, durability, and sustainability make it a leading choice for any number of residential, commercial, and infrastructure applications.

While that flexibility underpins precast concrete's appeal, it also poses unique challenges for manufacturers faced with crucial engineering, lifting, connecting, and insulating decisions.

Leviat, with decades of experience in concrete construction accessories, is the industry leader in products and solutions for the precast and prestress segments. With a global team of engineering and manufacturing experts, we offer a comprehensive portfolio of proven products and services for your next project.

**Trusted products** featuring decades of quality, reliability, and real-world performance.

**A team of industry experts** in precast product design, engineering, and manufacturing.

**A culture of constant innovation** that fosters engineered solutions for projects of any size or complexity.



# Application Range



## Connections

Leviat offers a range of products and services for all aspects of precast and prestress operations, including industry-leading lifting systems, reinforcing supports, rebar couplers, and more.

### 1 Walls

From lifting to insulating and connecting, Leviat supports the entire production process from design to erection and bracing.

### 2 Double Tees

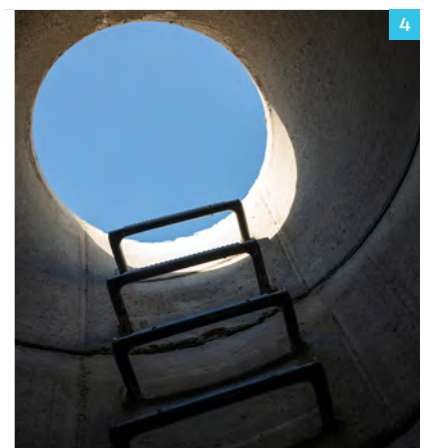
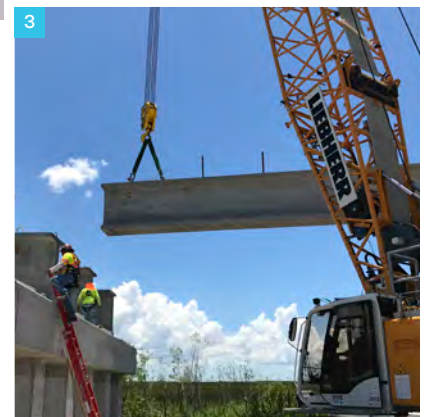
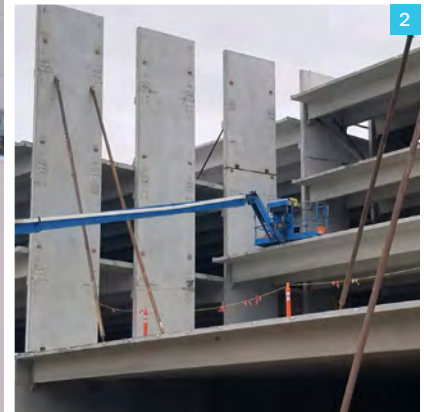
MB Rapid Lok allows for faster and safer production and erection, combined with versatile and high-capacity anchor channels.

### 3 Bridge Beams

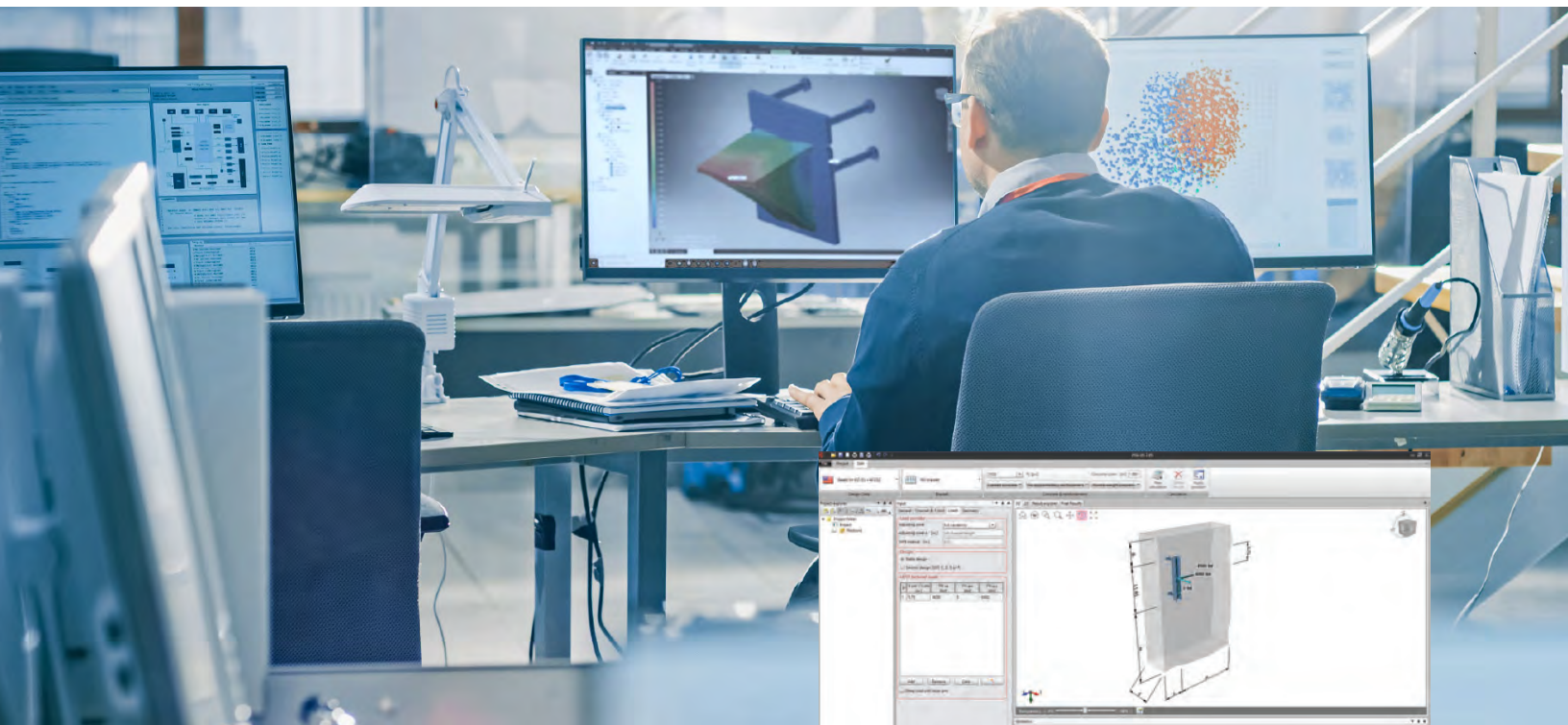
From prestress products to bridge hangers and splicing products, Leviat offers solutions to all of your needs.

### 4 Utility Products

Leviat offers a complete portfolio of high-performance, corrosion-resistant solutions that not only enhance the durability and reliability of underground utility networks but also improve the safety of workers and expedite construction processes, ensuring long-term uninterrupted service for businesses and communities.



# Engineering



Leviat has a dedicated team of engineers to provide technical and engineering support for all of our products. Whether you have general questions or need assistance with a specific application, our team can be your best partner in finding solutions.

## Design Assistance

Leviat's engineering team is ready to provide design assistance for your next project. Our team can assist in sizing anchors, developing proper lifting sequence, and providing CAD details. We are able to include formal calculations that can be included with the design package, and also sign and seal if required.

## Design Software

Leviat offers a variety of free software to help clients find solutions for their next project. All of our software is intuitive and was developed with the end user in mind. Calculation reports are available and can easily be placed into a calculation package. Our engineering team is available to provide tutorials on any of our software.

Contact us at [engineeringsupport@leviat.us](mailto:engineeringsupport@leviat.us) to partner with us at your next project.

## Technical Training

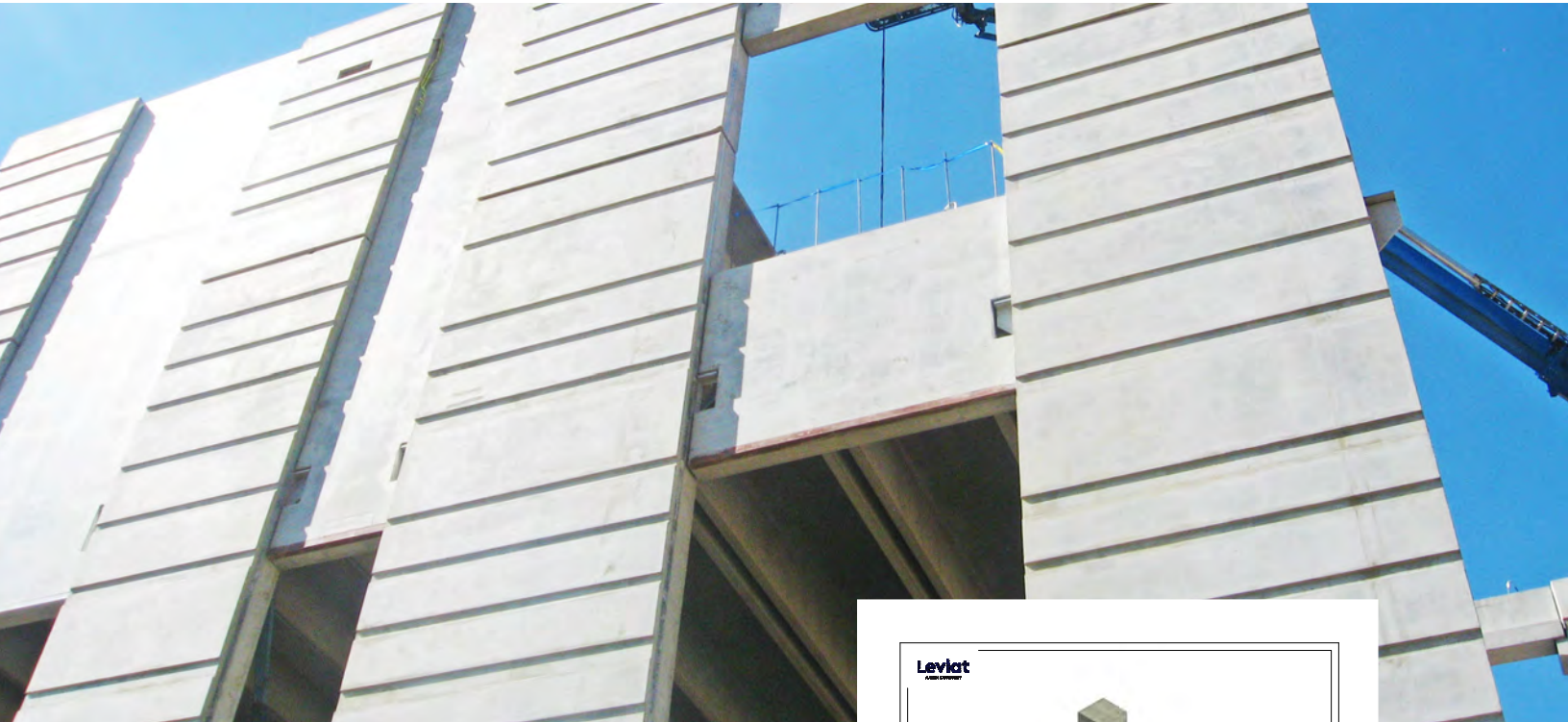
Our team can provide training on any of our products and software. We partner with you to make sure you understand how our products are designed and installed. We also provide support for any issues that may arise. We are your solutions partner from planning until the last panel is set.

## We also offer:

- BIM / CAD Models
- PE seals for USA and Canada
- Site Support
- Continuing Education



# Shop Drawings



Leviat now offers shop drawings to support design constraints from your team so you may meet tight deadlines. We will work to meet your internal drawing guidelines.

Leviat Shop Drawings help optimize precast panel construction, allowing your team to:

## More efficiently assemble your plans:

Leviat shop drawings are your one-stop source for every detail you need to plan and cast your next precast job.

## More quickly form panels:

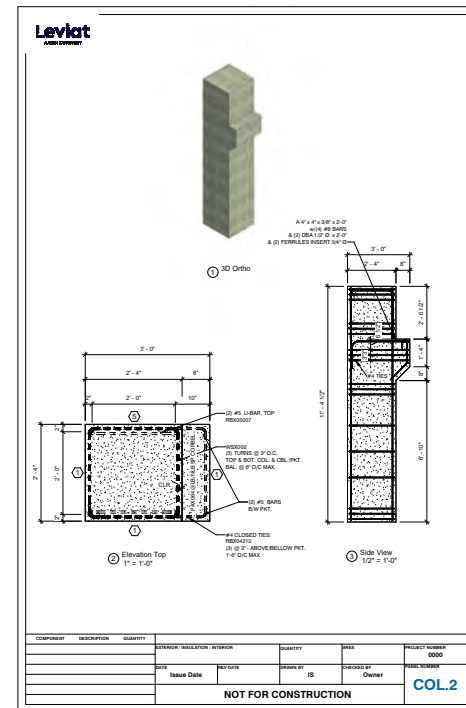
Overall panel geometry - including doors, windows, and other openings - are detailed on each drawing.

## More accurately place components:

Lift hardware, reinforcing, and other construction accessory locations are clearly dimensioned for quick and precise placement.

## More confidently complete your project:

Our team of experienced engineers and drafters are an invaluable resource, helping ensure that your plans are all aligned for a successful pour.



Precast Shop Drawing

Leviat Shop Drawings also offer:

- Panel Casting Layout Plans
- Material Take-offs
- 3D Model Views

# Panel Insulation Systems

Thermomass is the original, high-performance insulation system for precast concrete panels.

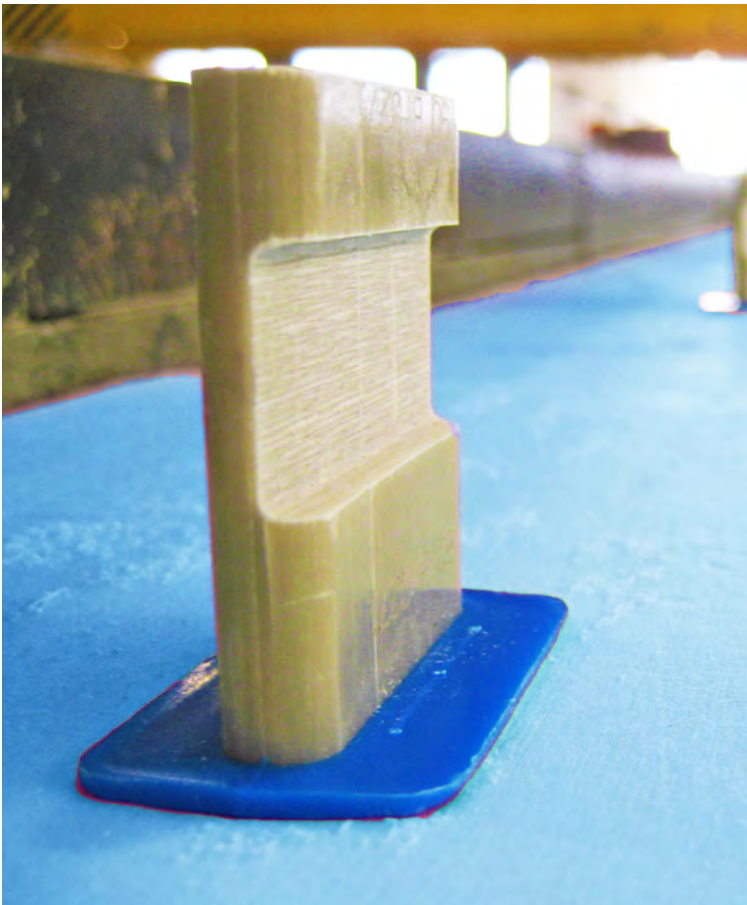
Thermomass insulation systems pair high-performance fiber-composite connectors and energy-saving rigid insulation to create building envelopes that exceed stringent energy codes while minimizing energy loss and mitigating condensation and mold growth concerns. The result: improved energy-efficiency, reduced maintenance, and enhanced durability.

- **Edge-to Edge Performance:** Non-conductive connectors tie together the entire wall assembly, allowing for a thermally-broken, edge-to-edge insulated building envelope.
- **Extensively Tested:** Thermomass connectors are fully tested for load bearing, fire, thermal cyclic and long-term durability by independent labs, including ICC.
- **Easy Installation:** Pre-drilled insulation and threaded connector options allow for simple, easy installation of Thermomass components.
- **Structural Options:** Connector options are available to cast both structurally non-composite and structurally composite panels.

## Thermomass Custom Insulation Offering

Leviat offers a variety of solutions, including engineered systems and fabricated insulation components:

- **Fabricated:** Insulation is pre-drilled and fabricated to match available project specifications; window, door and wall openings; and other details.
- **Punched:** Full 4'x8' insulation sheets are punched with regular hole spacing for easy connector installation.
- **Express:** full sheets of insulation are provided with threaded MS-T Series connectors to be drilled into insulation.



	Fabricated	Punched	Express
<b>Design Services</b>			
Panel design assistance	✓	✓	✓
Preliminary thermal/moisture/R-value analyses	✓	✓	✓
Pre-design education/CEUs	✓	✓	✓
<b>Production Services</b>			
Insulation pre-drilled to accept connectors	✓	✓	✗
Panel insulation layouts	✓	✗	✗
Detailed system manual included	✓	✗	✗
Itemized insulation with optimized connector patterns	✓	✗	✗



## Thermomass System NC

Thermomass is the original, high-performance insulation system for precast concrete panels.

Thermomass insulation systems pair high-performance, easy-to-install fiber-composite connectors and energy-saving rigid insulation to create sandwich panels that exceed stringent energy codes while minimizing energy loss and mitigating condensation and mold growth concerns. The result: improved energy-efficiency, reduced maintenance, and enhanced durability.



MS-T Series



MC/MS Series



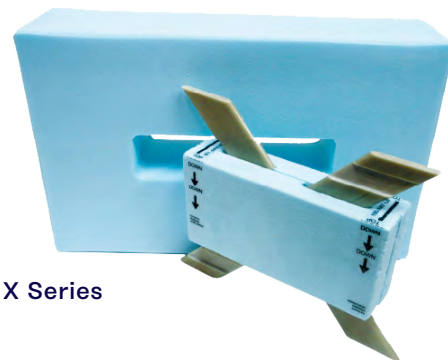
## Thermomass System SC

System SC optimizes insulation coverage and composite action, providing designers the highest level of insulation value in a composite panel. High-capacity CC Series and X Series connectors to tie the two wythes of concrete and a selection of high-performance rigid insulation board such as XPS, ISO or EPS.

- Specially engineered connectors allow for shear transfer between the concrete layers, allowing them to create a structurally composite assembly and a thinner panel.
- Reduced thermal bowing when compared to traditional composite walls with metal ties or solid concrete sections.



CC Series



X Series



# Panel Insulation Systems

With over 40 years of experience, Leviat is the industry-leader in integral concrete insulation systems and connectors, providing energy-efficient insulation systems for tens of millions of square feet of precast construction around the world.



## Welded Wire Girders

A trusted, cost-effective tie for integrally insulated concrete sandwich panels cast with a middle layer of rigid insulation between two outer layers of

concrete. These girders are made in America in our Hazelton, Pennsylvania, manufacturing plant.



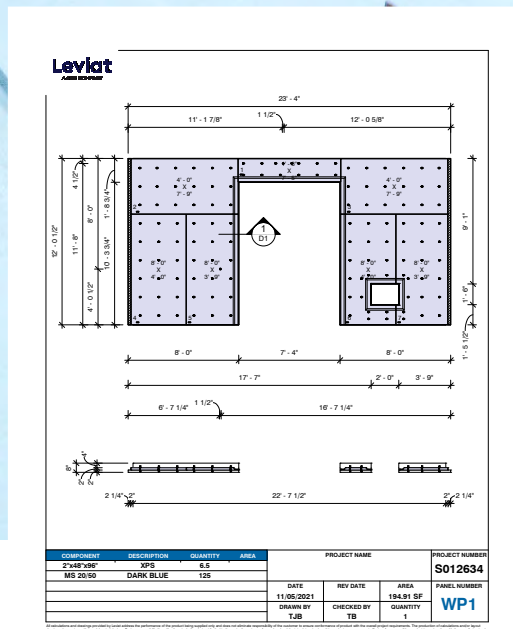
## Modular Precast

Modular Precast construction is ideal for correctional facilities, hotels, schools, apartments, and dormitories. Leviat manufactures a complete

system for energy-efficient, durable, modular precast units.



# Fabricated Insulation Layout Services



Leviat offers a number of insulation layout services to ensure your precast project is constructed as efficiently, economically, and as safely as possible. We are ready to support you through the entire process, from planning through erection.

## Expert Advice

We support your design by providing recommendations on the best insulation systems to meet your new building's thermal requirements and composite structural behavior.

## Custom Service

We offer a number of custom insulation fabrication levels specifically aligned to meet your project requirements and construction schedule.

## Insulation Layout Drawing

## Easy Installation

Leviat's Thermomass system manual is your guide for a smooth installation at the plant. The detailed layouts provide easy to follow instructions for the placement of prefabricated insulation sheets and connector products.

## We also offer:

- Detail review
- Thermal and Dewpoint analysis
- Composite panel design assistance
- PE seals for USA and Canada

# Panel Lifting

## MB Rapid Lift System

The Meadow Burke Rapid Lift System is an industry-leading, safe and reliable precast lifting and handling system that offers a broad selection of anchors, easy installation, and outstanding maneuverability for any precast application.

### MB RL-35 Ring Clutch

The MB RL-35 Ring Clutch consists of a main clutch body, curved bolt/handle, and bail allowing for a full 360° rotation of the bail around the main body. Installation is quick and easy; rotate the curved bolt/handle to the open position, drop the main body into the anchor recess and rotate the bolt/handle.



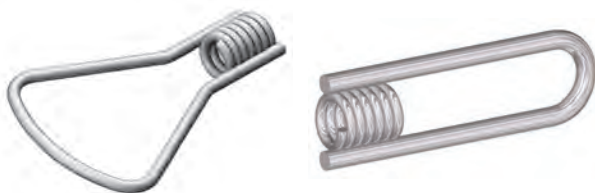
### MB Rapid Lift Edge Lift Anchor

The MB Rapid Lift Edge Lift Anchor is designed for safe edge lifting and rotation of thin wall precast elements. It is designed with two ears on the head to restrict the rotation of the ring clutch. As a result, lateral forces are transmitted to the anchor instead of to the concrete to prevent spalling.

### MB Rapid Lift Face Lift Anchor

The MB Rapid Lift Face Pick Anchor provides high pullout strength with a low profile, making it ideal for face and back lifts of thin-wall units and stripping, handling, and erection applications.

Designed for 2-ton, 4-ton, 8-ton, and 10-ton capacities; Rapid Lift anchors are available in plain and hot dip galvanized finishes.



### MB Coil Lifting Inserts

Meadow Burke manufactures several coil inserts and accessories that are implemented and effectively used in the lifting and handling of precast concrete elements. Unusual and/or complicated lifting problems are often accomplished with a coil insert solution.





#### **MB RL-45 Recess Member – 4 Hole**

The MB RL-45 Recess Member – 4 Hole is the standard reusable plastic recess plug used in most Rapid Lift applications and color-coded based on size.

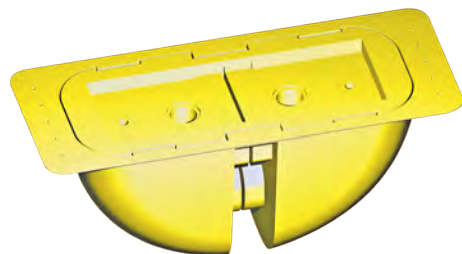


#### **MB Rapid Lift Holding Plate - Magnetic**

The Holding Plate – Magnetic is available to quickly set and securely hold a Rapid Lift anchor in a metal form without hole drilling or welding.

#### **MB RL-53 Recess Member**

The MB RL-53 Recess Member – Disposable is available for use with the 2/2.5, 4/5 and 8/10-Ton Rapid Lift applications. 8/10 ton plastic disposable recess members utilize a  $\frac{3}{8}$ " diameter coil nut embedded in the member for attachment purposes.

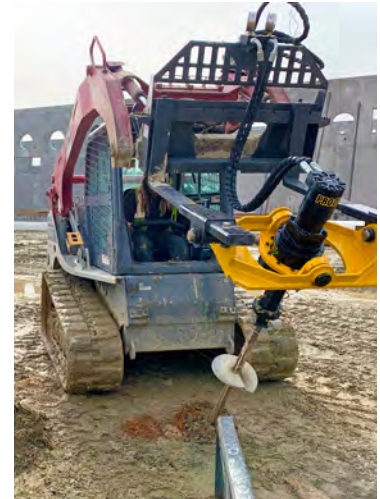


# Panel Bracing

## MB Brace Badger Helical Anchor System

There are times in precast construction when conventional bracing to floor slabs is not possible or desired. Until now your option has been to construct expensive and time consuming concrete deadmen. The Meadow Burke Brace Badger™ is revolutionizing precast construction by providing contractors with an economical and efficient alternative.

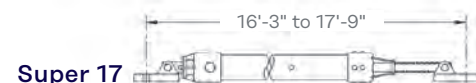
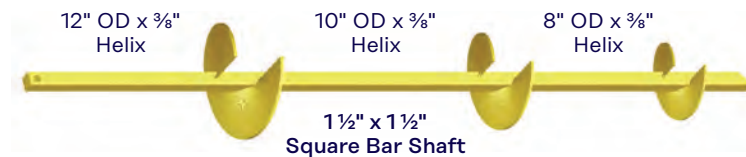
- Eliminates concrete deadmen
- Environmentally friendly
- Offers quick installation and removal
- The strongest brace anchor available
- Verifiable load capacity in all soil conditions
- Works with **ALL** Meadow Burke braces
- Reusable



## MB Braces

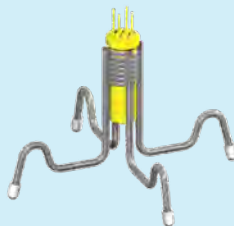
Meadow Burke braces are used to temporarily support concrete panels to resist wind loads until a permanent connection is made. The brace is anchored to a concrete floor slab, deadman or an MB Brace Badger. The top foot attaches via an embedded brace insert.

- Variety of sizes available
- Braces can be used on the inside or outside of the structure
- All braces have additional length adjustment to simplify final plumbing
- Complies to ASCE 37-02 and ASCE 7-10 regarding basic wind speeds
- Engineered to be used with Meadow Burke's Badger, Slam Anchor, MB Brace Bolt and Brace Insert.



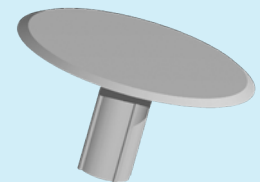
## MB B-75 Wall Brace Insert

MB B-75 Wall Brace Insert is cast-in place insert used to connect braces to wall panels.



## B-75 Patch

The MB Super Patch is the modern method to permanently and aesthetically cover insert holes on tilt-up panels.





# Panel Accessories

## MB Brace Bolt

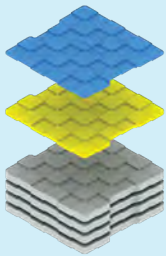
MB Brace Bolts safely and economically secure precast braces to the slab without the inconvenience or uncertainty of cast-in-place inserts or expansion bolts. When bracing is no longer needed, simply disengage the brace and remove bolt. The MB Brace Bolt can be used up to five times.



## MB Rapid Bolt

MB Rapid Bolt safely and economically secures tilt-up and precast braces to the slab.

- Single-use
- 3/4 x 6.25" in length
- 8100 lb SWL in 6" concrete



## MB RL-75 Shims

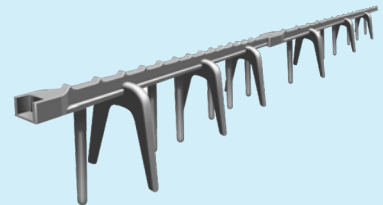
MB RL-75 shims are designed for quick and safe adjustments for uneven footings or panels. They provide excellent stability and will not rust or stain the concrete.

- Manufactured with extremely tough, high-impact polystyrene
- Ultimate compressive strength of 8,000 psi per ASTM-D695
- Manufactured by LeviaT in the USA



## MB Tuff Chair

Meadow Burke Tuff Chairs are designed and manufactured to provide enhanced strength and durability. Tuff chairs deliver fast and reliable rebar placement without the rust concerns of common metal chairs. Non-corrosive plastic produced in concrete gray coloring to camouflage its appearance.



## MB X Tuff Bolster

The MB Tuff Slab Bolsters are made with an advanced PC/ABS plastic formula for best-in-class strength and durability, providing exceptional performance even in extreme environments. Fast and reliable rebar placement without the rust concerns of common metal supports. Developed to meet ACI 318-14 requirements.

# Panel Connections

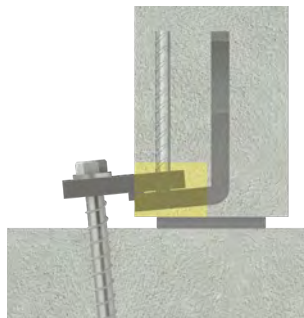
## NEW PRODUCT

### MB Super Lynk SR

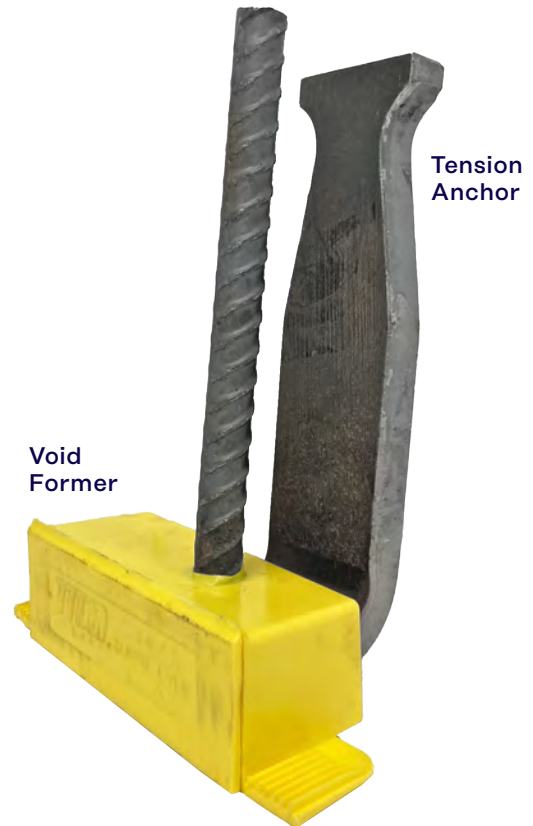
Super Lynk is a fast, strong and discrete way to permanently connect concrete panels to footings. It requires only a single bolted connection and is easily concealed within the normal grout line process.

- **Saves time and money:** The single  $\frac{3}{4}$ " x 10" MKT bolt (provided) connection is simple to install and eliminates the need for epoxy, grout and in-field welding. Bolting and panel grouting can be done same day as lift.
- **Improved performance:** The engineered, patented connection system has been developed by Leviat's team of Tilt-Up experts to meet ACI 318-14
- **Improved aesthetics:** With a profile less than 2 $\frac{1}{2}$ ", the Super Lynk is discrete relative to alternative connection systems and can easily be concealed by normal backfill and landscaping.
- **Shear Resistance:** The advanced Shear Key available with Super Lynk SR is engineered to resist shear loads.

US PATENT 10,577,789

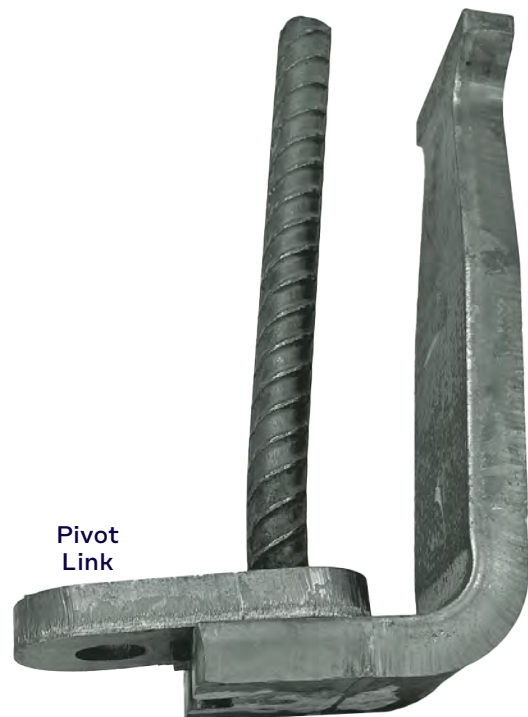


Shear Key



Void Former

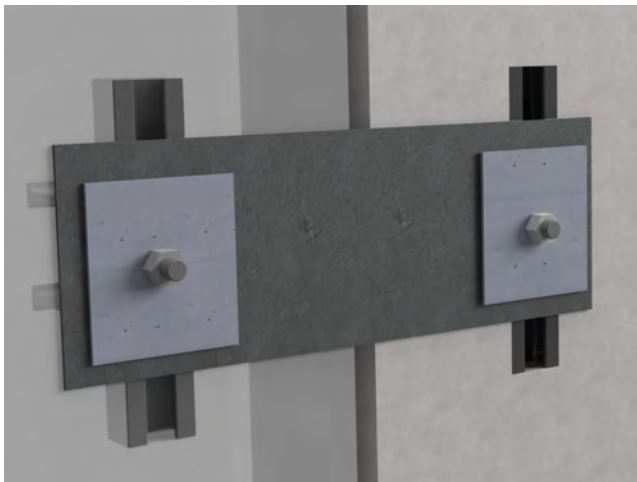
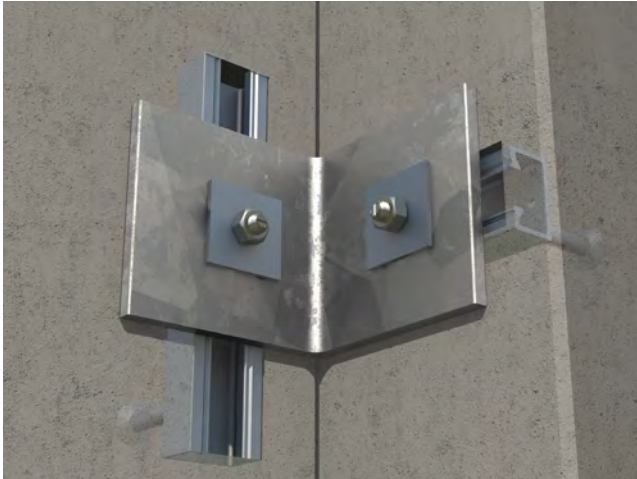
Tension Anchor



Pivot Link



## Halfen Adjustable Bolted Connection



US PATENT 10,577,789

Halfen Adjustable Corner Connection Kits reduce labor cost and provide a simple, non-weldable connection and are available in two standard profiles for minimum wall panel thicknesses of 6" and 8".



- **Reduced labor costs:** As bolted connections can be installed by the same crew members that erected the panels.
- **Non-weldable connection:** only a torque wrench is required for installation.
- **Adjustable connection:** Counteracts construction problems caused by foundation elevation issues or panel placement inconsistencies.
- **Simplified connection:** Channel connections are easily adjustable and can be made in any weather condition.
- **Reduced overall construction times:** By eliminating traditional weld plates and field welding.

Occasionally, loading on the building envelope requires adjacent wall panels to be connected. Traditionally, this is accomplished through expensive and time-consuming welding operations.

The Halfen Inline Panel-to-Panel Connection Kit delivers an adjustable, non-weldable connection and is available in a standard profile for minimum wall panel thicknesses of 6".



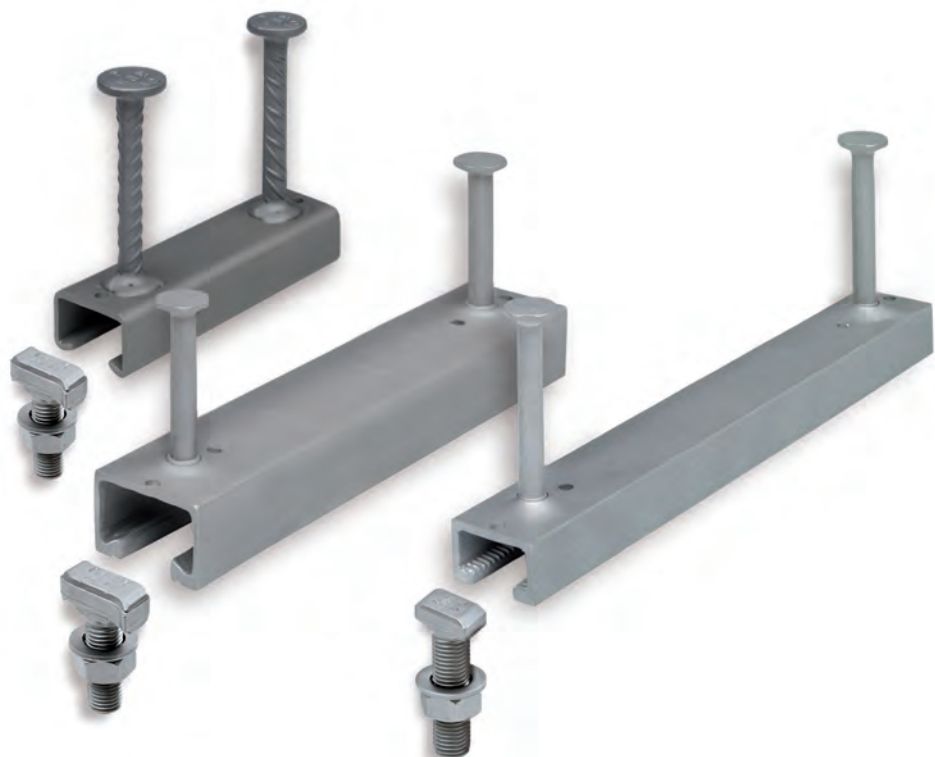
## MB Burke Slot

The MX-55 Burke Slot Insert is a high-strength slotted insert designed for use with type straps or threaded straps.

- Available in 6 1/2" lengths in plain or hot dip galvanize finish.
- Can be supplied with 3/4" NC threaded or 3/4" coil nut
- Sealed to prevent concrete from leaking into the insert. Removal of the perforated seal exposes the slot for quick connection of the strap.



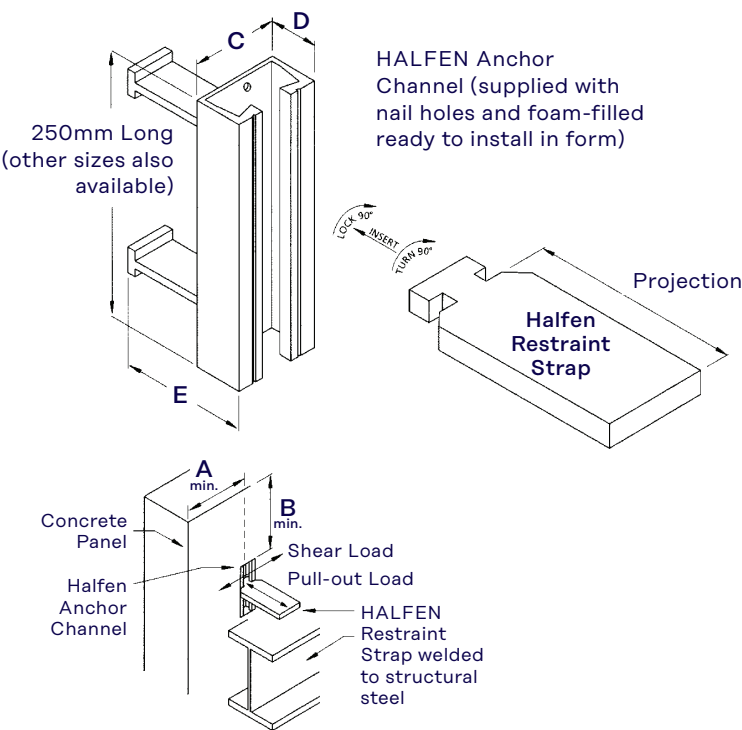
# Anchor Channel Connections



Based on nearly a century of innovation and development, Leviat's full line of Halfen cast-in, adjustable channels significantly reduce installation time versus traditional welding. The result: faster construction, increased safety, and reduced overall cost.

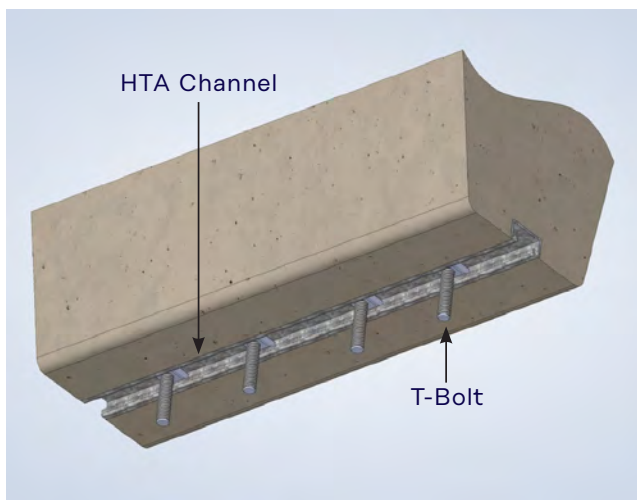
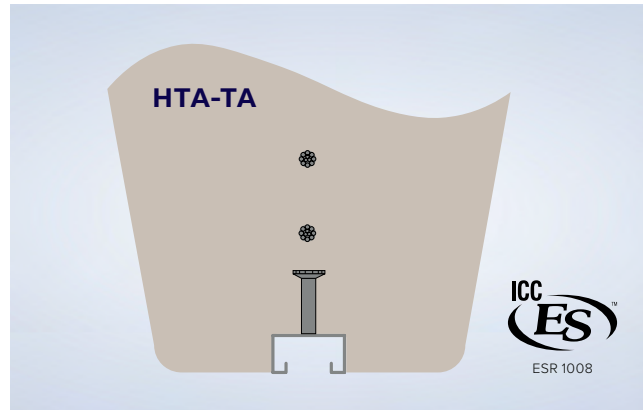
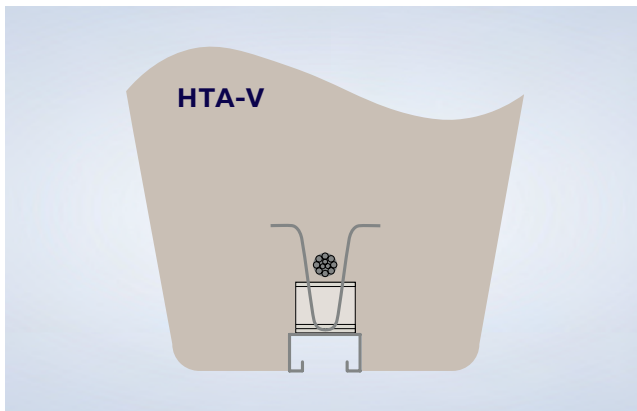
## Adjustable Panel Connection

HALFEN Cast-In Anchors provide simple adjustable connections for the restraint of concrete panels. When used with the hardware illustrated, sliding or fixed connections can be selected.

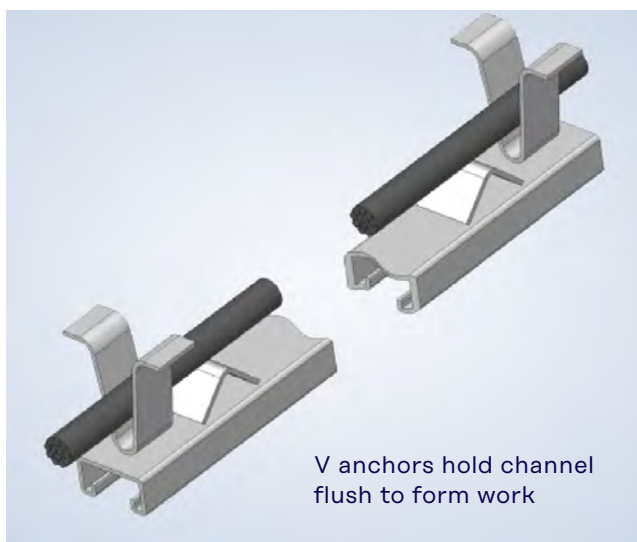
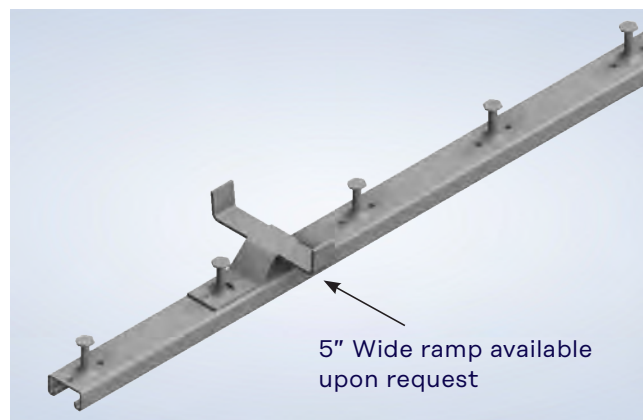




# Double Tee Connections



Channel bolts and MEP attachment hardware can not be placed past the last anchor.



Cast directly into the double tee stem, Halfen HTA channel products deliver adjustability and eliminate the need for post-installed anchors, minimizing potential drilling damage to the finished concrete or underlying reinforcement.

Halfen HTA channel products meet MEP load requirements and provides simple, as well as time- and cost-saving installations.

- **Efficient:** Halfen channels provide quick installation of standard 1 1/8" MEP hardware.
- **Safe:** Halfen channels are ICC tested and certified to suspend heavy duty applications.
- **Sustainable:** Halfen channels and components are easily adjustable and reusable.

# Double Tee Corbel Replacement

## MB Rapid Lok Ultimate

The MB Rapid Lok Ultimate provides a safer, more efficient engineered solution to permanently support stems of a double tee beams and other decking elements.



The MB Rapid Lok Ultimate creates a steel projection from a concrete structure which acts as a shelf, able to carry the weight of a double tee beam. At the precast plant, Embed Plates are cast into the concrete structure. Once on-site, the units' void formers are removed to reveal recesses. The Bearing Angle ears are then engaged into the Embed Plates, securely engaging them in place without requiring a weld.

### Benefits for structural engineers

- Capacity rating using ultimate loads aligns with current design methodology
- Consolidation of models and capacity ranges for simpler design selection
- Load tested to ACI-318's 5% fractile to meet current code requirements
- Fire rating for 3 hours. Tested per ASTM-E119 and CAN/ULC-S101

### Benefits for precasters

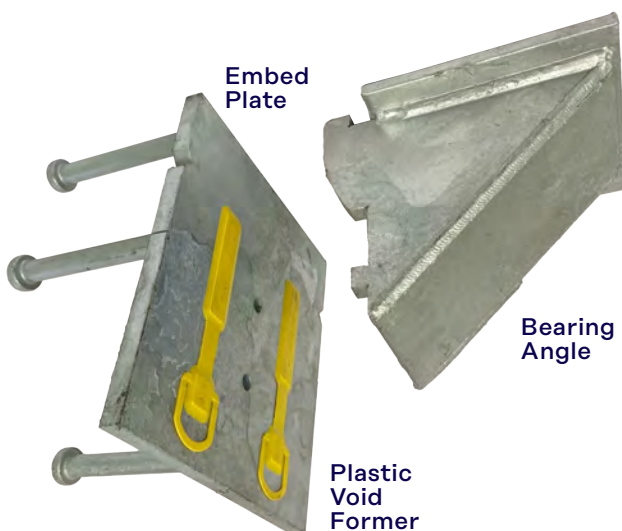
- Labor efficiencies from simplified panel forming
- Cost reductions in transportation and dunnage

### Benefits for designers

- Fluid feature in the finished structure emulating a concrete cast corbel
- Potential cracking with traditional concrete corbels is eliminated

### Benefits for contractors

- More efficient installation by avoiding obstructions from preinstalled concrete corbels

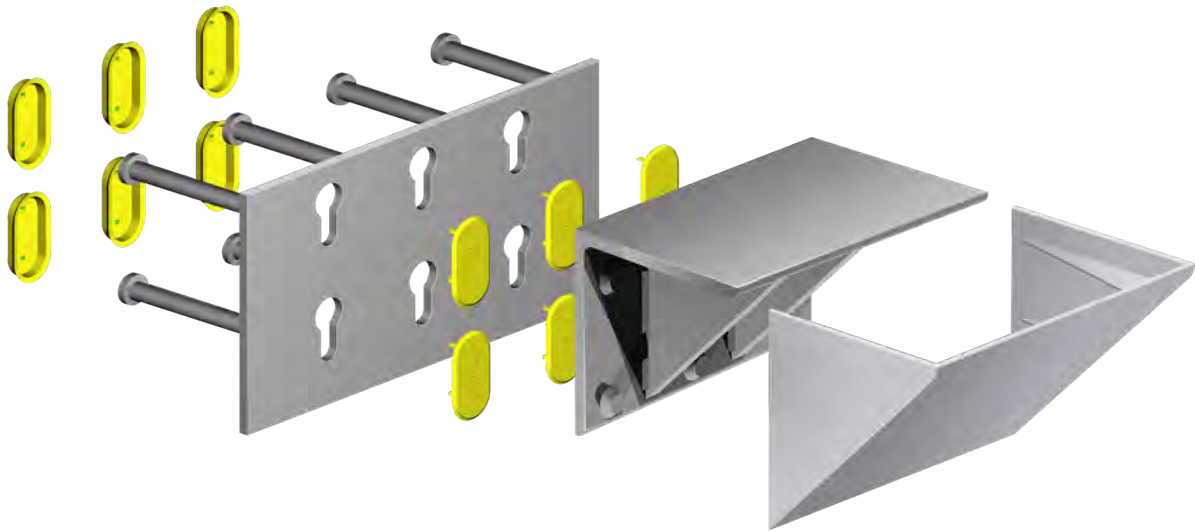


US PATENT NO. 10,883,265



## MB Rapid Lok Gen II

MB Rapid Lok Gen II is a trusted, cost-effective replacement for conventional concrete corbels to carry the weight of a Double Tee, Stair, Beam or other precast elements. The Rapid-Lok Gen II System consists of an Engineered Steel Corbel that locks into an Embed Plate cast into a structural wall.



The Embed Plate is cast into the structural wall at the precast plant, with the faceplate flush to the wall face. Once the precast structure is on site, the void formers attached to the face of the Embed Plate that create recesses are removed by the Erector to reveal 'keyholes.'

The Steel Corbel's interlocking studs are then engaged into the keyholes of the Embedded Plate, securely locking them in place without requiring a weld.

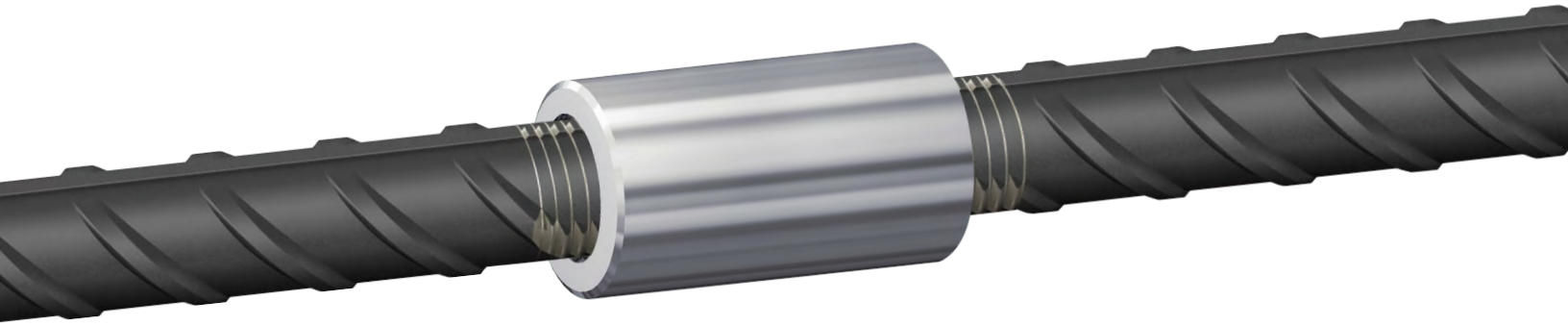
Selection of the specific Steel Corbel is based upon load requirements, fire rating and aesthetic finish desired for the project.



## MB Stud Extender

The MB Stud Extender is designed as an adjustable height support chair for embed/weld plates. The Stud Extender eliminates the tedious, labor-intensive wood forming or risky "wet setting" of embed plates in the top-face of a concrete panel.

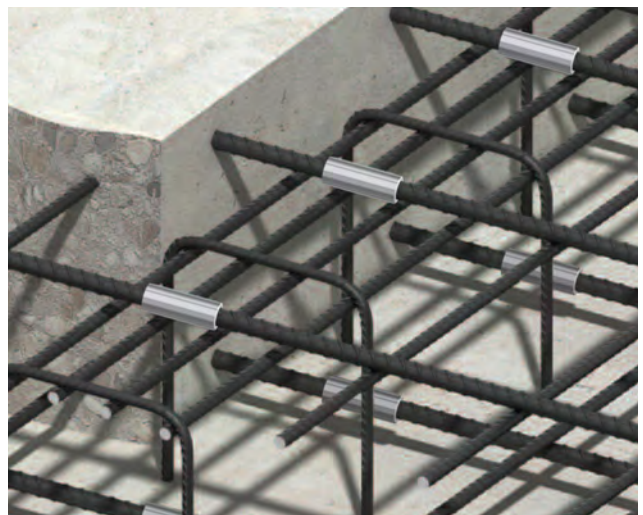
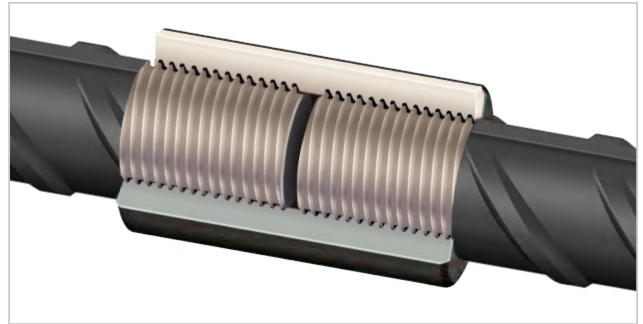
# Splicing Products



## BT Couplers Type 1 & Type 2HS Rebar Splicing System

Meadow Burke BT Couplers are versatile and robust Type 1 & Type 2HS Splicing Systems used to mechanically connect rebar sections in segmental pours as an alternative to traditional dowel bars. The three-part system consists of a Splice Bar, Coupler and Setting Bar that meets the mechanical splice strength requirements of ACI-318-19 when used to splice grade 60 rebar.

- **Improved performance:** Exceeds ACI-318-19 Type 1 & Type 2HS splice requirements and maintains reinforcing steel continuity independent of concrete cover.
- **Saves time and money:** Reduces costly form repairs by eliminating drilling of forms and simplifies form stripping
- Available in standardized lengths (sizes #4 – #11) and configured to order



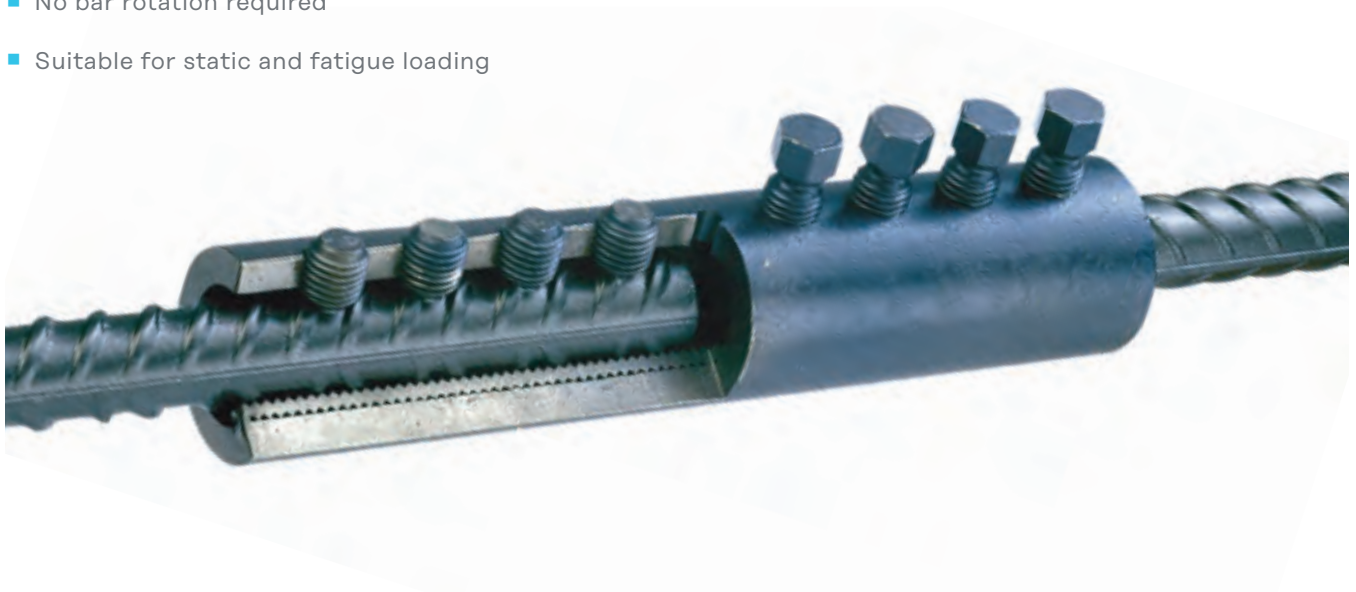
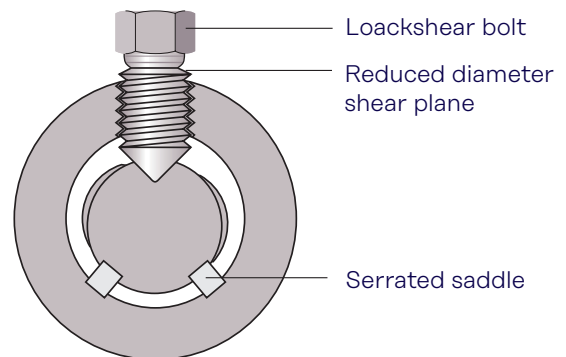


### MBT Couplers Type 2 Rebar Splicing System

MBT couplers provide an easy to install, cost-effective method of joining reinforcing bars, particularly when the fixed bar is already in place and space is limited.

Tightening of the shear bolts embeds the conical ends into the rebar, securing it against the serrated saddles. When the predetermined tightening torque is reached, the bolt heads shear off, providing an instant visual check of correct installation.

- Coupler performance meets ACI 318-19 Type 1 & 2 splice requirements
- Maintains steel reinforcing continuity, independent of concrete cover
- No bar end preparation required
- No bar rotation required
- Suitable for static and fatigue loading

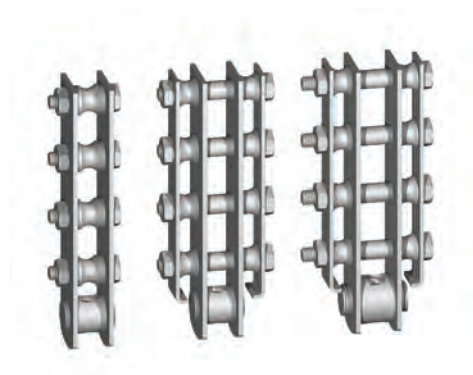




# Prestress Accessories

## MB Prestress Hold Downs

Meadow Burke Prestress Strand Hold Down devices feature dependable and predictable mechanical connections that do not require welding.



## MB DT-21 Pushdown 0.5

The MB DT-21 Pushdown 0.5 is made of ductile iron and is designed to hold 0.5" strands. It is available in four sizes to hold 3 strands, 5 strands, 8 strands and 10 strands. A  $\frac{3}{4}$ " diameter hole in the top of the unit is used in conjunction with a tapered rod to position and hold the pushdown in place. The tapered rod should have an integral shoulder to bear on the top of the pushdown. **Note:** This product is not load rated.



## MB Strand Chucks

Multiple Use Strand Chuck assemblies consist of the body, coupler, spring, and jaws with rubber o-rings. Individual replacement parts and transition splices are available upon request.

Single Use Strand Chuck assemblies include the body, two-piece wedges with or without wire rings, or three-piece wedges, which are available in various sizes.



Multiple Use

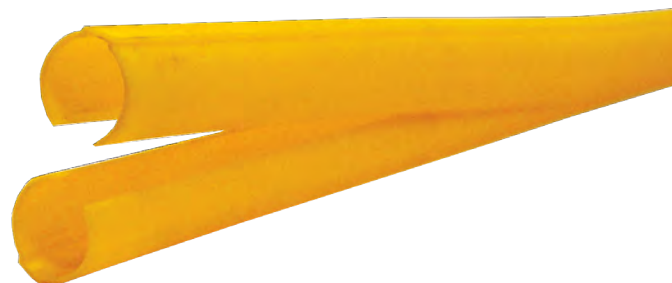


Single Use

## MB CH-31 Debond Strand Snap

High-performance concrete and long-span girders often feature increased strand diameters and higher stressing forces. The MB Strand Snap Debond was developed to mitigate the accompanying end stresses and cracking in these elements.

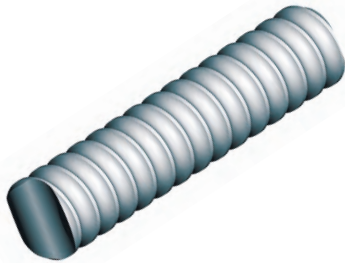
Methodically developed through in-plant testing and long-term use, MB Strand Snap Debond's patented tight-seal application and high-impact plastic maintains shape during installation and concrete placement, allowing it to dissipate bursting stresses.





### MB Strand Caddy

Simple by design, the MB Prestress Strand Caddy keeps the strands separated and spaced in the proper locations before, during and after the placement of concrete. Made to order based on specific strand, strand patterns and product width.



### MB CR-5 Coil Rod

MB CR-4 Continuous Coil Rod is manufactured and stocked in 12'-0" lengths. Special lengths are available up to 20'-0".

Requires minimum (2) Standard CN-5 Coil Nuts or (1) Heavy CN-25 Coil Nut to develop full safe work load. Minimum coil thread penetration is same as shown for coil bolts. May be cut with carborundum blades without thread damage.

### MB Bridge Hangers

The MB HF-17 Hanger Frame allows for ½" coil bolts to be positioned at 15 degree and 45 degree angles away from the beam sides allowing the ledger support member to be away from the beam side. Hanger is adjustable from the topside of the formwork.



# Utility Connections

Leviat manufactures a complete line of precision components for the utility and infrastructure precast concrete industries.

## 1 MB Bowco Duct Terminator

## 2 MB Bowco Pulling Irons

## 3 MB Bowco Sump Pan

## 4 MB V Anchor



### MB Bowco Duct Terminators

MB Bowco Duct Terminators are designed for underground precast utility boxes and are used to connect PVC electrical ducts with a watertight seal or to provide a smooth edge for pulling cables. A solid membrane is included to prevent water infiltration of unused terminators.

- Available in 2", 3", 4.35", 4.5", 5", 6", and 8"
- 1" and 2" extensions also available
- DB2 metric size also available



Leviat offers custom terminator panels that are preassembled into brackets and eliminate the labor-intensive assembly during setup. Custom terminator panels are ideal for use when casting thicker walls or larger panels.



### MB Bowco Pulling Irons and Pockets

MB Bowco Pulling Irons provide an anchor point when pulling cables through concrete utility structures. Patented plastic-covered irons and galvanized steel pulling irons are available.

Pulling Iron Pockets are also available and allow for recessing the pulling iron into a wall or floor using the patented Snap-N-Seal System to easily snap the pulling iron into place, creating a tight seal; no tape is required to keep concrete out.







### MB Bowco Threaded Inserts and Locators

Threaded inserts are a strong, cost-effective, corrosion-resistant method used to bolt equipment, lift lightweight pieces or to suspend pipe and conduit from concrete panels. Safe working loads are available and range from 1,000 lbs to 3,000 lbs.

- Locators available: Tap on, Stick on, or Press in
- Various sizes from 1/4" to 7/8" available

### MB Bowco Manhole Steps

MB Bowco Manhole Steps feature the industry's most comprehensive anti-slip safety design. The cone shaped treads penetrate the dirt and mud that may collect on shoes, and the extra tall end lugs combine for added assurance of better footing.

- Available in 10" and 13" and in safety orange or standard black
- Step accessories, pockets and locators also available
- DOT-approved in many states



### MB Bowco Sump Pan

MB Bowco Sump Pans are the ideal way to create sump cavities in utility boxes, communication boxes and manholes. Sump Pans are made of corrosion free material that is lightweight and easy to use. The lid is heavier than water so it won't float away and comes with a nylon tether.

- 4", 8", and 10" deep sump pans available
- Sump pan lid available and sold separately

### MB Bowco Septic Filters and Seals – Poly-Seal HD35 & HD40, LD-1 Pipe Seal

MB Bowco Poly-Seal pipe seals easily mount to existing locators and eliminate the need to grout around the pipe. Ideal for septic tanks, distribution boxes, and drainage boxes.

MB Bowco EF-235 Septic Filter is designed to extend the life of your drain field by preventing suspended solids larger than 1/16" from leaving the septic tank.



MB Bowco  
Poly-Seal  
HD35 &  
HD40



MB Bowco  
LD-1 Pipe Seal



MB Bowco  
Septic Filter

# Utility Lifting



## MB Dogbone® Lifting System

The MB Dogbone Lifting System is designed to lift and handle precast concrete elements quickly, safely, and economically.



### MB DB-52 DogBone Anchor

MB DB-52 DogBone Anchors are manufactured from high-quality, high-strength steel. Each anchor head is clearly marked with its safe working load.

## MB DB-1 MB DogBone Lifting Clutch

The MB DB-1 MB DogBone Lifting Clutch has a "T" slot that engages the head of a MB DogBone Anchor. The combined rotation capabilities of the main body and the bail allows a precast panel to be lifted, turned, tilted and/or rotated while under load.



### MB DB-5 DogBone Recess Former

The MB DB-5 DogBone Recess Former is a reusable unit with a threaded stud and wing nut. The threaded stud extends through the form and the accompanying wing nut secures the unit to the form. Removal of the form is required to expose the embedded anchor.



### MB Bowco Lift Pins

With a proven safe working load, Meadow Burke Lift Pins with Sockets are designed to assure easy installation and safe handling of concrete products by providing a fully threaded connection. The threaded socket can be used in wet-cast concrete by casting it into the precast section at the time of production, and the threaded lift pin is installed after concrete has cured. The product can be handled with spreader bar and chains, hooks or slings.

### MB V-Anchor Lifting System

The Meadow Burke V-Anchor System is the safest and most reliable clutchless system on the market and can be used with the 5-Ton or the larger 7-Ton Hook Recess Members.



### MB Cable Lift Loop Plus

The Meadow Burke Cable Lift Loop + Plus System was developed and tested for high-load applications including, but not limited to utility products, beams and columns.

Yellow markings indicated proper embedment depth



### MB Hook Lift Lifting System Anchors

The Meadow Burke Hook-Lift Utility Lifting System is simple in design and construction, yet exceptionally strong and versatile in application. It can be used in face lift or edge lift application and requires no additional reinforcement or special lifting hardware.

Hook Lifts are made in the USA.







# Leviat®

Innovative engineered products  
and construction solutions that  
allow the industry to build safer,  
stronger and faster.



## North American Locations

### California

3611 E La Palma Ave  
Anaheim CA 92806  
(800) 804-6565

### Iowa

1000 Technology Drive  
Boone IA 50036  
(800) 232-1748

### Pennsylvania

565 Oak Ridge Road  
Hazle Township PA 18202  
(800) 550-0060

**Florida** Corporate  
6467 S Falkenburg Road  
Riverview FL 33578  
(800) 282-7213

**New Jersey**  
526 US Route 46  
Teterboro NJ 07608  
(800) 207-7778

**Texas**  
7000 Will Rogers Blvd  
Fort Worth TX 76140  
(800) 993-9641

**Georgia**  
3080 N Lanier Parkway  
Decatur GA 30034  
(800) 241-5662

**Oregon**  
155 SE Hazel Dell Way  
Canby OR 97013  
(888) 232-9991

**Texas**  
8521 FM 1976  
Converse TX 78109  
(800) 323-6896

## Contact Information

**Customer Service**  
(877) 518-7665

**Email**  
info@leviat.us

**Engineering Support**  
(813) 212-5866

**Web**  
www.leviat.com

## Leviat.com

---

For information on certified management systems and standards see [www.meadowburke.com](http://www.meadowburke.com) | [www.halfen.com](http://www.halfen.com) | [www.thermomass.com](http://www.thermomass.com)

### Notes regarding this catalogue

© Protected by copyright. The construction applications and details provided in this publication are indicative only. In every case, project working details should be entrusted to appropriately qualified and experienced persons. Whilst every care has been exercised in the preparation of this publication to ensure that any advice, recommendations or information is accurate, no liability or responsibility of any kind is accepted by Leviat for inaccuracies or printing errors. Technical and design changes are reserved. With a policy of continuous product development, Leviat reserves the right to modify product design and specification at any time.





L112-A003

Imagine. Model. Make.

[Leviat.com](https://Leviat.com)